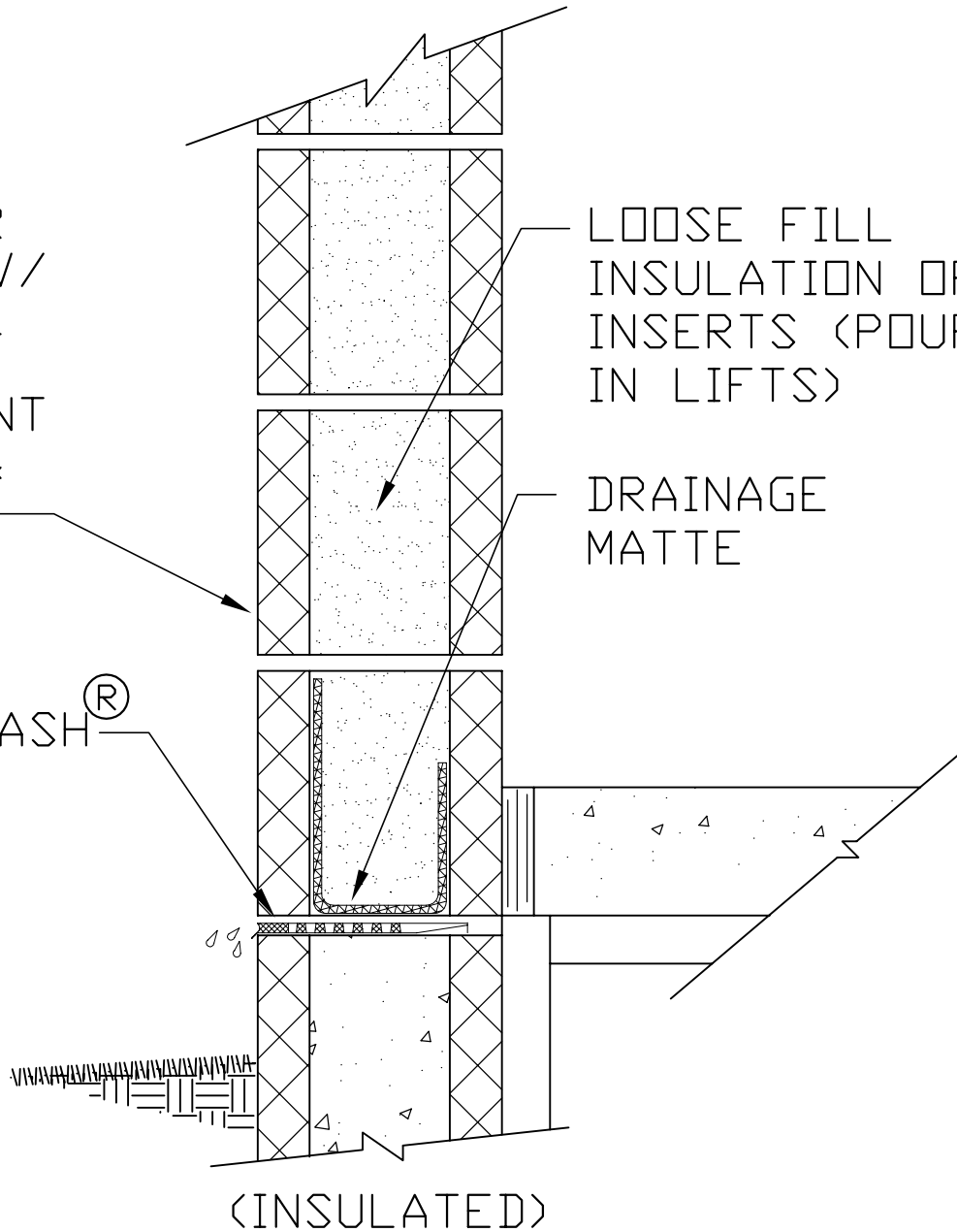


EXTERIOR
8" CMU W/
INTEGRAL
WATER
REPELLANT
IN CMU &
MORTAR

LOOSE FILL
INSULATION OR
INSERTS (POUR
IN LIFTS)

DRAINAGE
MATTE

BLOK-FLASH[®]



NOTES:

- BLOK-FLASH PERFORMS BEST WHEN INSTALLED IN CMU BED JOINTS LOCATED ABOVE FINISHED GRADE AND BELOW FINISHED FLOOR HEIGHT.
- INSULATION FILL SHOULD PROMOTE POSITIVE MIGRATION OF DOWNWARD FLOWING MOISTURE TO THE FLASHING COURSE. AVOID FILLING CMU CORES WITH INSULATION MASS THAT MAY HINDER FULL CORE MIGRATION OF MOISTURE DOWN TO THE FLASHING COURSE.

Detail No.
BFB-1



No. 4,910,931, No.5,870,864, No. 6,202,366 and No. 6,912,820 B2. Additional Patents Pending

8" Single-Wythe
Base (Insulated)



Mortar Net
USA LTD.

541 S. Lake St. • Gary, IN 46403 • (800) 664-6638 • www.MortarNet.com