



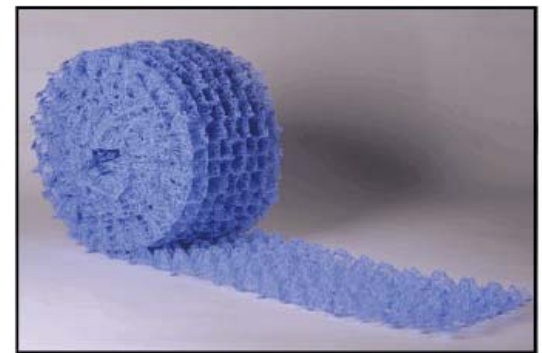
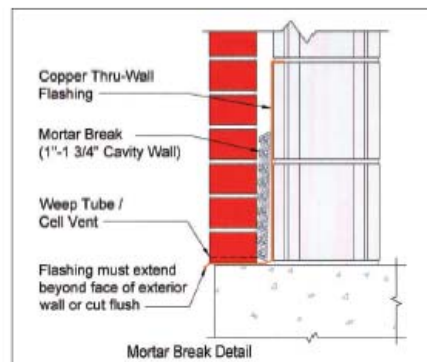
Mortar Break®

The Complete Mortar Deflection and Air Filtration System

Over 20 years ago Advanced Building Products, a leading manufacturer of thru-wall flashing, saw the need for a less labor intensive way to keep head joints free from mortar droppings. With this thought in mind we introduced our Mortar Break® system. Since its inception, Mortar Break® has been the cost efficient way to keep head joints free from mortar droppings, while saving significant labor costs during the installation phase. Made from 40% recycled materials, this unique and proven effective mortar deflection device qualifies for L.E.E.D. rating system credits.*

* Will not support mold growth.

Advanced Building Products recently had its Mortar Break® system tested by an independent test lab (Architectural Testing Inc. of York, PA). The Mortar Break® system exceeded the expectations of experts as a mortar deflection device. Additionally, the air infiltration results surpassed that of the competition.



Basic Use:

- For use at all flashing locations, such as cavity, composite, single wythe and veneer applications (see detail).
- The polymer core geomatrix design allows moisture to seep down through any mortar droppings and weep out of the wall through the cell vents or weep holes.
- Mortar Break®, used with properly installed flashing and weep systems along with good mortar applying techniques, will ensure the performance of a well designed masonry wall.

Short-Form Specification:

The mortar deflection device in a 1" cavity wall shall be Mortar Break® polymer core geomatrix composed of polypropylene strands woven into a .80" thick mesh, as manufactured by Advanced Building Products, Inc. The product shall be installed in accordance with manufacturers' recommendations.

Properties:

Tensile Properties:	ASTM D5035
Strength at Ultimate (lbs/ft):	
Roll Direction	285 lbs/ft
Cross Roll Direction	310 lbs/ft
Elongation:	
Roll Direction	60%
Cross Roll Direction	55%

Dimension & Weight:

Core Weight	21.3 oz/yd ²
Thickness	.80 inches
Width	10.0 inches
Roll Length	50.0 feet
Roll Gross Weight	4.5 lbs
Sizes:	
	10" x 50' (4 Rolls/Box)
	13" x 50' (3 Rolls/Box)
	16" x 50' (2 Rolls/Box)



MASONPRO, Inc.
 43300 Seven Mile Road
 Northville, MI 48167
 1-800-659-4731
 www.masonpro.com