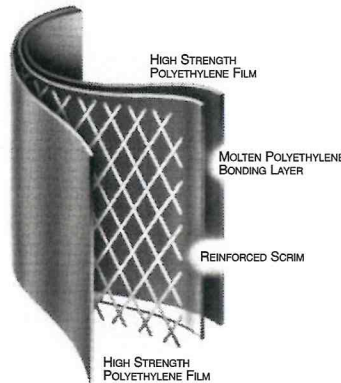


PRODUCT DESCRIPTION

DURA-SKRIM 2 and 10HUV consist of two sheets of high-strength virgin polyethylene film laminated together with a third layer of molten polyethylene. A heavy-duty scrim reinforcement placed between these plies greatly enhances tear-resistance and increases service life. DURA-SKRIM's heavy-duty diamond reinforcement responds to tears immediately by surrounding and stopping the tear.



PRODUCT USE

DURA-SKRIM 2 is used for temporary applications that require a lightweight yet highly tear-resistant film such as building enclosures and abatement applications.

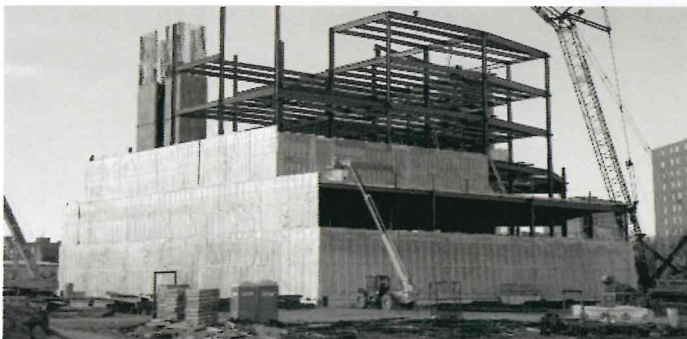
DURA-SKRIM 10HUV is used in applications that require good outdoor life and demand high puncture and tear strengths. The two outer layers of DURA-SKRIM 10HUV contain high concentrations of UV inhibitors and thermal stabilizers to assure added outdoor life up to approximately one year.

SIZE & PACKAGING

DURA-SKRIM 2 stock sizes are 6, 8, 10, 12, 16, 20, 24, 32, 40, and 60 feet wide and 100 feet long.

DURA-SKRIM 10HUV is available in a variety of widths and lengths up to 100,000 square foot panels.

All panels are accordion folded and tightly rolled on a heavy-duty core for ease of handling and time saving installation. Custom sizes are available.



Building Enclosure

PRODUCT	PART NUMBER
DURA-SKRIM 2	R5CC
DURA-SKRIM 10HUV	R10CCU

COMMON APPLICATIONS

- Construction Enclosures
- Vapor Retarders
- Temporary Liners or Covers
- Erosion Control
- Shipping and Packaging
- Insulation Membranes
- Asbestos Abatements
- Fumigation Covers
- Temporary Walls
- Remediation Covers
- Temporary Erosion Control



PROPERTIES	TEST METHOD	DURA-SKRIM 2		DURA-SKRIM 10HUV	
		English	Metric	English	Metric
APPEARANCE		Clear		Clear	
THICKNESS, NOMINAL		6 mil	0.15 mm	10 mil	0.25 mm
WEIGHT PER MSF		19 lbs/MSF 2.7 oz/yd ²	93 g/m ²	41 lbs/MSF 5.9 oz/yd ²	200 g/m ²
CONSTRUCTION		Extrusion laminated with scrim reinforcement			
1" TENSILE STRENGTH	ASTM D7003	40 lbf	178 N	50 lbf	223 N
ELONGATION AT BREAK	ASTM D7003	400%	400%	800%	800%
GRAB TENSILE	ASTM D7004	50 lbf	223 N	85 lbf	378 N
*TRAPEZOID TEAR	ASTM D4533	35 lbf	156 N	52 lbf	231 N
HYDROSTATIC RESISTANCE	ASTM D751	32 psi	220 kPa	70 psi	483 kPa
MULLEN BURST	ASTM D751	65 psi	449 kPa	130 psi	897 kPa
MAXIMUM USE TEMPERATURE		180°F	82°C	180°F	82°C
MINIMUM USE TEMPERATURE		-70°F	-57°C	-70°F	-57°C
PERMEABILITY					
WVTR	ASTM E96 Procedure B	0.058 g/100in ² /day	0.90 g/m ² /day	0.017 g/100in ² /day	0.27 g/m ² /day
PERM RATING	ASTM E96 Procedure B	0.13 U.S. Perms	0.086 Metric Perms	0.039 U.S. Perms	0.026 Metric Perms

*Tests are an average of diagonal directions.



DURA-SKRIM 2 is a clear four layer reinforced extrusion laminate. The outer layers consist of a clear high-strength polyethylene film. DURA-SKRIM 2 is reinforced with a minimum of a 1000 denier scrim laid in a diagonal pattern spaced 3/8" apart with an additional machine direction scrim every 9" across the width. The individual plies are laminated together with molten polyethylene.

DURA-SKRIM 10HUV is a clear, four-layer reinforced extrusion laminate. The outer layers consist of a high strength polyethylene film with a high concentration of U.V. and thermal stabilizers. DURA-SKRIM 10HUV is reinforced with a minimum of a 1000 denier scrim laid in a diagonal pattern spaced 3/8" apart with an additional machine direction scrim every 3" across the width. The individual plies are laminated together with molten polyethylene.

Note: To the best of our knowledge, unless otherwise stated, these are typical property values and are intended as guides only, not as specification limits. NO WARRANTIES ARE MADE AS TO THE FITNESS FOR A SPECIFIC USE OR MERCHANTABILITY OF PRODUCTS REFERRED TO, no guarantee of satisfactory results from reliance upon contained information or recommendations and disclaims all liability for resulting loss or damage.

RAVEN
INDUSTRIES
Engineered Films Division

PLANT LOCATION

Sioux Falls, South Dakota

SALES OFFICE



ISO 9001:2000 CERTIFIED
MANAGEMENT SYSTEM