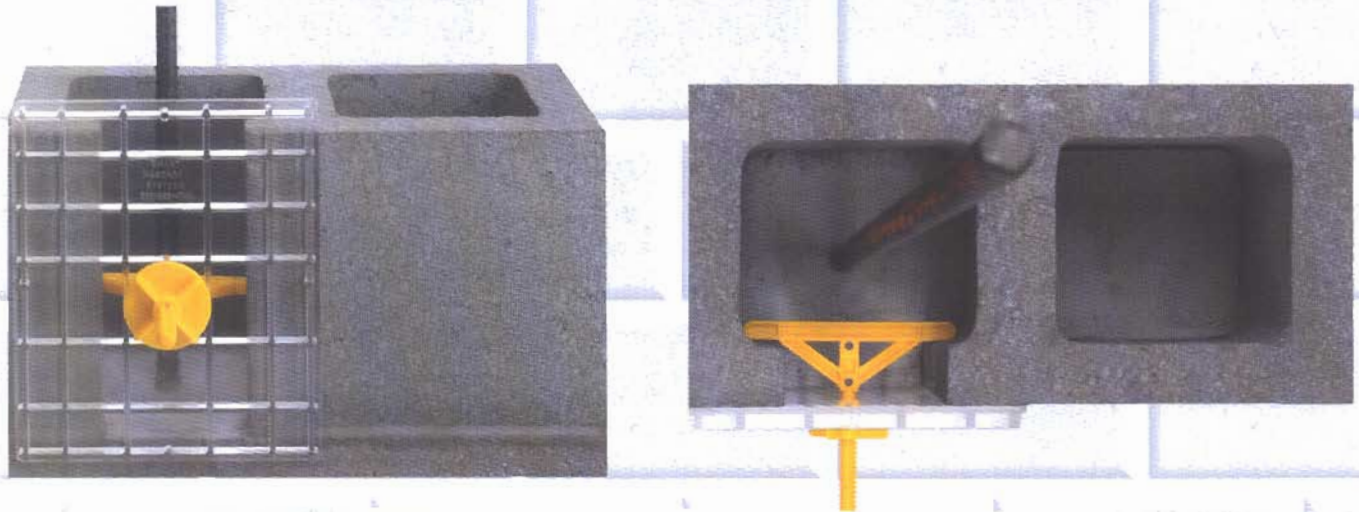


THE SMART MASONRY CLEAN-OUT SYSTEM



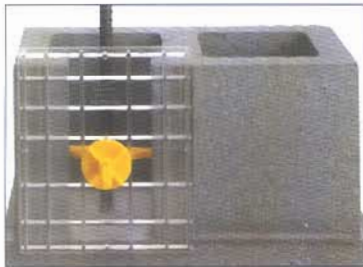
* Masonpro - 1-248-347-3824 *

MASONPRO, Inc.
43300 Seven Mile Rd.
Northville, MI 48167
1-800-659-4731

Smart Masonry Products, Inc.

Introducing the *Smart Masonry Clean-Out System*, a revolutionary system used to form Clean-Out Covers for *High Lift grouting* and consisting of a "T-Bolt", a re-usable "Nut" and a re-usable transparent "Window". The "T-Bolt" and "Nut" are made from hard ABS plastic. The transparent "Window" clean-out cover is made of polycarbonate, an extremely durable material commonly used in jet fighter canopies. While the "Nut" and "Window" are *re-usable*, the exposed portion of the "T-Bolt" easily breaks off after removal of the "Nut" and "Window" to provide a fast, clean, professional and economical means of forming reinforced masonry clean-out covers.

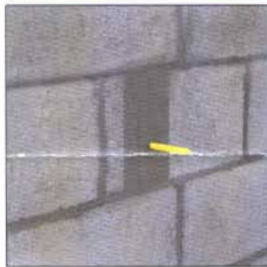
Benefits of the Smart Masonry Clean-Out System



Grout flow can be visibly monitored through the transparent "Window", virtually eliminating the problem of unfilled or honeycomb cells.



Contractors can spend thousands of dollars fixing voids after the removal of plywood covers.



Causes no damage to the face of the block and requires no patching of block as with the plywood/nailing method of forming clean-out covers.

Eliminates costly blow-outs that require chiseling and grinding.



Adds to your professional image.

The Smart Masonry Clean-Out System when installed, demonstrates the professionalism expected by engineers, architects, general contractors and especially inspectors.



Plywood and hammer cut inspection holes lead to excessive waste and cleanup.

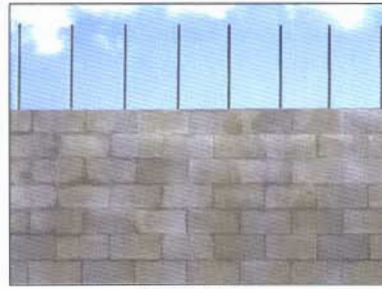
- **Advanced Placement** – allows for inspection through the transparent "Window" and readiness to pour immediately after inspection. No need to rush around nailing plywood over inspection holes.
- **Quick Installation** – can be installed and removed in seconds, vastly reducing labor costs.
- **Corrosion Resistant** – made from strong ABS plastic instead of metal, removing concern for corrosion of exposed fasteners.

"We have switched to the Smart Masonry Clean-Out System because it's less expensive, faster and safer than plywood and nails. We no longer worry about unfilled cells, blow-outs or punch-out with the new system".

– Gary Jones, President, Coastal Masonry (One of the largest masonry companies in the Southeastern U.S.)

What is High Lift and Low Lift Grouting?

High Lift and Low Lift grouting are terms used in building codes to define the method of placing grout in reinforced masonry walls. Codes allow the contractor to choose either method unless the structural engineer requires one or the other. Low Lift grouting may or may not require the use of inspection or clean-out openings. High Lift grouting will require inspection openings spaced no more than 32 inches apart or at each rebar location.



LOW LIFT



HIGH LIFT

High Lift Grouting leads to High Lift Profits

Smart Masonry Systems has recognized the value of the High Lift grouting method as referenced in ACI 530. Mason Contractors can easily choose the High Lift grout method to increase block production and project efficiency.

The following demonstrates the obvious cost advantages of choosing the High Lift grout method over Low Lift grouting:

	LOW LIFT GROUTING	HIGH LIFT GROUTING
* Maximum allowable increase in wall height (Production Stops) before grouting:	5ft	24ft
* Rebar drops:	Multiple	One (1)
* Wasted rebar laps:	Multiple	Zero (0)
* Inspections:	Multiple	One (1)
* Grout pours:	Multiple	One (1)
* Concrete truck & pump cleanup:	Multiple	One (1)
* Grout waste:	Multiple	One (1)
* Remobilization:	More	Less
* Labor efficient:	No	Yes
* PROFITABILITY:	LOWER PROFITS	HIGHER PROFITS

- **Save money on labor** – Studies actually show a 25-30% increase in productivity when High Lift grouting as opposed to Low Lift grouting. The High Lift grout method eliminates 2' to 4' lap bars that create obstacles for masons and reduces their productivity. Less lifting over rebar reduces a mason's fatigue and allows for increased productivity.
- **Save money on rebar** – fewer lap bars required.
- **Save money on grout pumping** – fewer grout pours = fewer pumping cycles.
- **Save money on grout** – fewer grout pours result in less overall grout waste.

High Lift grouting coupled with the Smart Masonry Clean-Out System might just be the 'Lift' that you need in order to beat your competition at bid time! It's the Smart way to go!

"Our foremen employ the high lift grout method and use the Smart Masonry Clean-Out System whenever possible. Low lift grouting is like paying a crew for 8 hours work and getting 6 hours production."

– John McConnell, President, Pompano Masonry Corporation (Top 10 rated masonry company in the U.S. by ENR)

