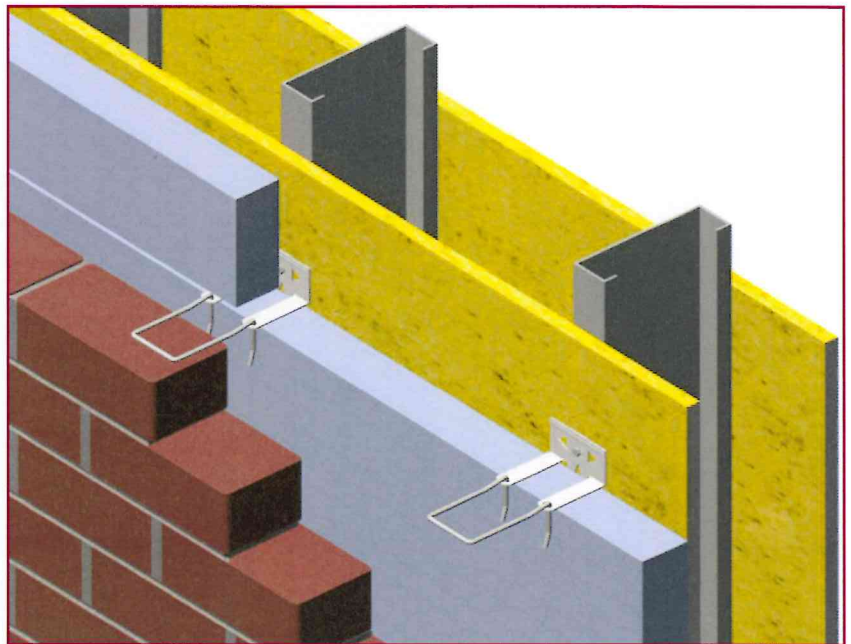
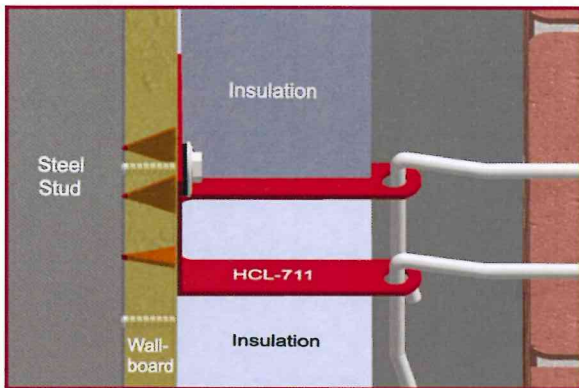
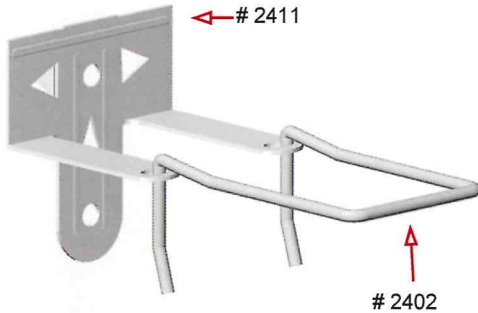


# PRODUCT SUBMITTAL



## # 2411 HCL-711 Adjustable Veneer Anchor



### MATERIAL CONFORMANCE

**ASTM A82 / A82M** - (Cold drawn steel wire)

Tensile Strength - 80,000 psi

Yield Point - 70,000 psi

**ACI / ASCE 530** - (Building code requirements for masonry structures)

**SHEET METAL** - (Carbon Steel) **ASTM A1008 / A1008M**

Mill Galvanized / Zinc Coating: **ASTM A641 / A641M (0.10 Oz per sq ft)**

Hot Dip Galvanized after fabrication / Zinc Coating

**ASTM A153 / A153M-B2 (1.50 oz per sq ft)**

Stainless Steel **ASTM 580 / ASTM 580M Type 304** (Type 316 available on special order)

**Steel Products (flats):**

Mill Galvanized & Hot Dip,  
59.2% Post-Consumer  
8.8% Post Industrial / Pre -  
Consumer

Stainless Steel,  
60% Post Consumer  
V O C Content - 0%

**WIRE Recycled Content:**

Mill Galvanized & Hot Dip,  
87% Post-Consumer  
13% Post Industrial / Pre -  
Consumer

Stainless Steel,  
60% Post Consumer  
V O C Content - 0%

### SIZES / FINISHES

**# 2411 HCL711:**

14 gauge    12 gauge    5/8" prong    1/2" prong

Must be 3/4" more than insulation

**Insulation:**

0"    1"    1-1/2"    2"    2-1/2"    3"

**# 2402 Hook:** 3/16" diameter

3-1/4"    4-1/4"    5-1/4"    Other \_\_\_\_\_

**FINISH:**

Mill Galvanized  
 Hot Dip Galvanized  
 Stainless Steel



**MASONPRO, Inc.**  
Northville, MI 48167  
1-800-659-4731  
www.masonpro.com