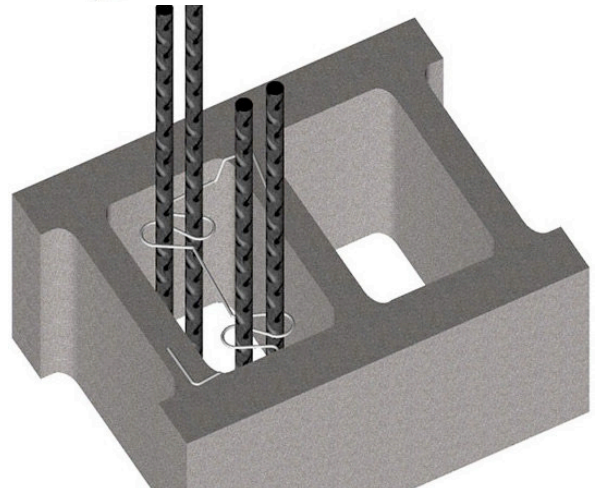
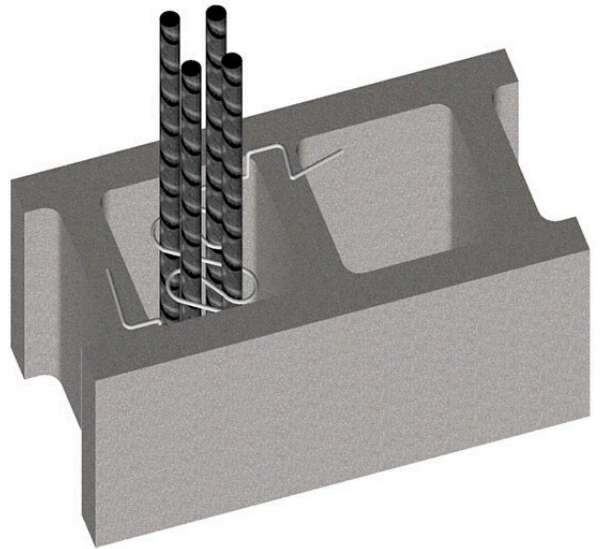
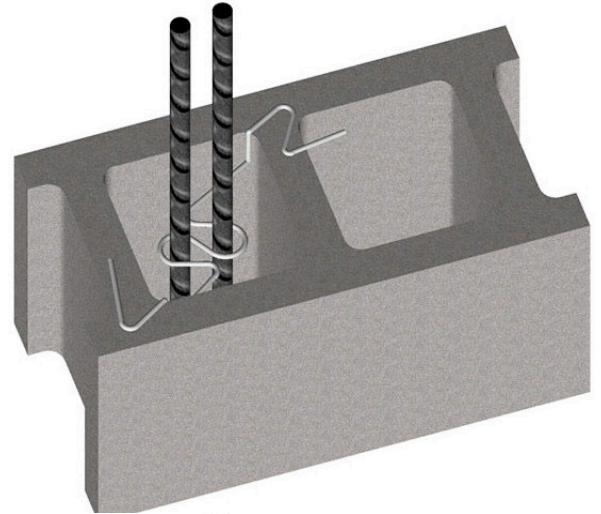
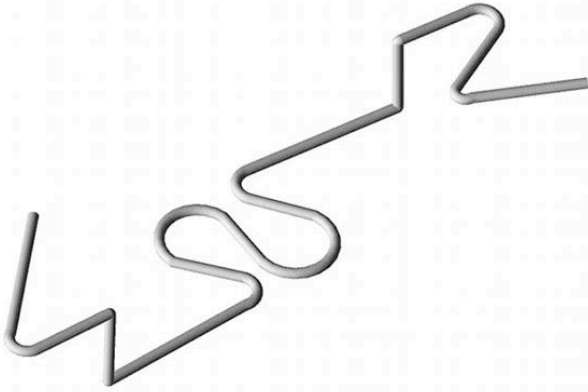


PRODUCT SUBMITTAL



WIRE-BOND[®]

Core Lock Rebar Positioner



MATERIAL CONFORMANCE

ASTM A82 / A82M - (Cold drawn steel wire)
Tensile Strength - 80,000 psi
Yield Point - 70,000 psi
ASTM A951 / A951M-06 - (Standard Specification for Steel Wire for Masonry Joint Reinforcement)
ACI / ASCE 530 - (Building code requirements for masonry structures
Mill Galvanized / Zinc Coating: **ASTM A641 / A641M (0.10 Oz per sq ft)**
Hot Dip Galvanized after fabrication / Zinc Coating
ASTM A153 / A153M-B2 (1.50 oz per sq ft)
Stainless Steel **ASTM 580 / ASTM 580M Type 304** (Type 316 available on special order)



WIRE Recycled Content:

Mill Galvanized & Hot Dip,
85% Post-Consumer
13% Post Industrial / Pre - Consumer
Stainless Steel,
60% Post Consumer
V O C Content - 0%

DESCRIPTION / SIZES / FINISHES

DESCRIPTION:

- CoreLock is installed 1-1/4" deep into the CMU instead of on top of the block.
- Diagonal positioning in the core ensures that rebar is always centered automatically and prevents any movement.
- Does not interfere with installation of wire reinforcement.
- One piece design with no welds.
- Safety bend ensures correct installation.

SIZES:

8" Single 8" Double 12" Single 12" Double

FINISH:

Mill Galvanized Hot Dip Galvanized Stainless Steel

MASONPRO, Inc. 43300 Seven Mile Road, Northville, MI 48167
1-800-659-4731

www.masonpro.com



www.wirebond.com