

MORTAR CATCH®



Basic Use:

For use at all flashing locations where wide cavity construction is required. The polymer core geomatrix design, when shaped in a “U” configuration on the jobsite allows moisture to weep at both inner wall surfaces.

Mortar Catch® used with quality flashing, weep holes, and good mortar applying techniques will ensure the performance of a properly designed masonry wall.

Composition:

Mortar Catch® is a polymer core geomatrix composed of nylon strands woven into a .40” thick mesh. It is resistant to acid and alkali present in fresh mortar mix and is non-absorbent.

Size:

Mortar Catch® is available in either a 10” or 20” width, at 100’ long rolls.

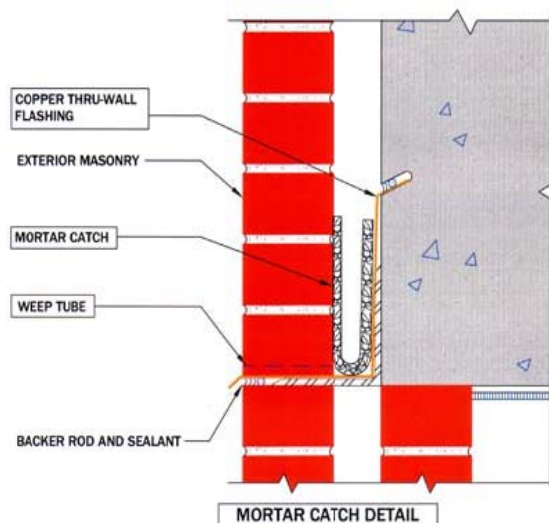
Installation:

Install Mortar Catch® by bending the 20” (or 10”) wide strip into a U-shape and positioning in the cavity. Mortar Catch® will expand against the inner surfaces of the cavity. No additional shims or filler will be needed. The horizontally-placed strips should be located on or slightly above the flashing.

No special attachment is required.

Short-Form Specification:

The weep hole drainage element in the cavity wall shall be Mortar Catch® polymer core geomatrix composed of nylon strands woven into a .40” thick mesh, as manufactured by Advanced Building Products, Inc., telephone number 1-800-252-2306. The product shall be installed in accordance with manufacturers’ recommendations.



MASONPRO, Inc.
43300 Seven Mile Road
Northville, MI 48167
1-800-659-4731
www.masonpro.com