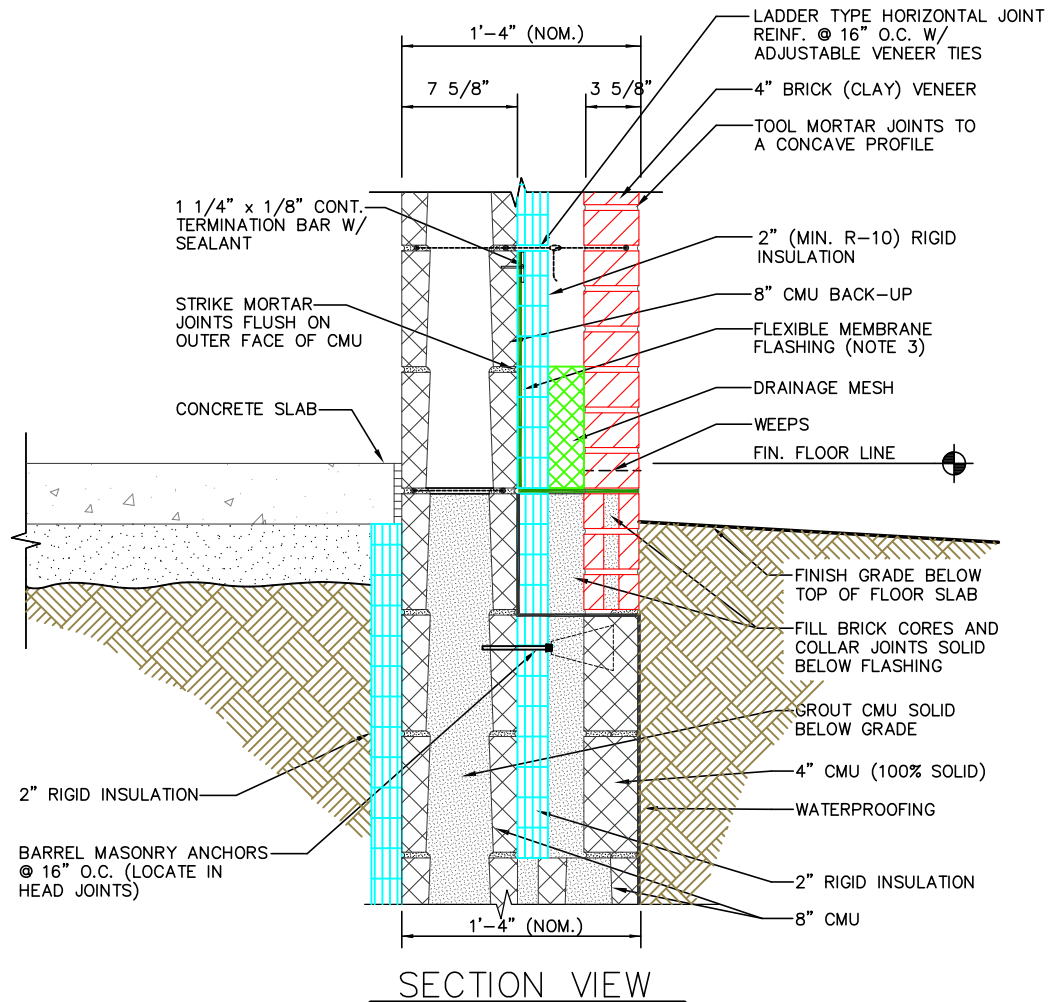


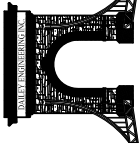
ISOMETRIC VIEW



- NOTES**
- 1) CMU BELOW GRADE SHALL BE MEDIUM OR NORMAL WEIGHT.
 - 2) SPECIAL CARE IN BRICK SELECTION MUST BE EXERCISED WHEN PLACING BRICK BELOW GRADE.
 - 3) IF A DRIP EDGE IS NOT DESIRED, THE FLASHING MEMBRANE SHALL, MINIMALLY, EXTEND TO THE OUTBOARD SURFACE OF THE EXTERIOR WALL FINISH. IF A METAL DRIP EDGE IS DESIRED, MODIFY THIS DETAIL TO BE SIMILAR TO THE 2-PIECE FLASHING SHOWN ON DETAIL 6D SHEET A-7. EXERCISE CAUTION WHEN USING METAL DRIP EDGES AT ACCESSIBLE LOCATIONS DUE TO POSSIBLE SHARP METAL SEE: <http://www.mim-online.org/bulletins.html>

2A
A-2
BASE DETAIL W/
VENEER BELOW GRADE
2" RIGID INSULATION

DAILEY ENGINEERING, INC.
8485 STEPHENSON ROAD
ONSTED, MI 49266
PH. # (517) 467-9000
FAX # (517) 467-9010



MIM MASONRY
Institute of Michigan
DETAIL SET MW.8.RB.2 (2" HIGH PERFORMANCE CAVITY WALL)

IN CHARGE:	MIM
DRAWN:	M.W.F.
APPROVED:	T.A.D.
DATE:	11/04/2014
TITLE:	BASE DETAIL W/ VENEER BELOW GRADE
SHEET:	A-3.1