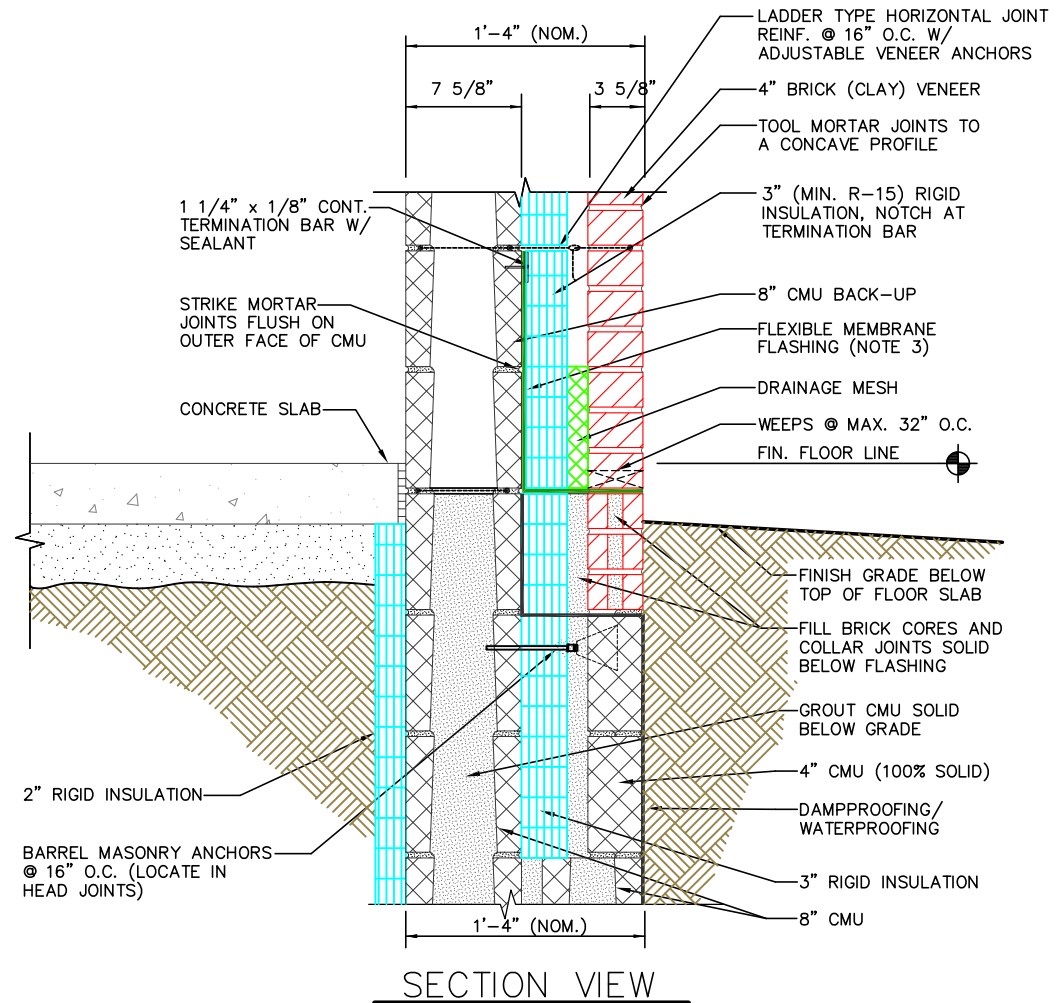


ISOMETRIC VIEW



SECTION VIEW

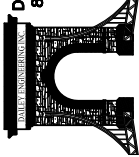
- NOTES**
- 1) CMU BELOW GRADE SHALL BE MEDIUM OR NORMAL WEIGHT.
  - 2) SPECIAL CARE IN BRICK SELECTION MUST BE EXERCISED WHEN PLACING BRICK BELOW GRADE.
  - 3) FOR ADDITIONAL INFORMATION ON BASE FLASHING, SEE M.I.M. FAQ #22

<https://www.masonryinfo.org/architects/frequently-asked-questions/in-commercial-construction-how-should-the-horizontal-leg-of-flashing-at-the-base-of-the-wall-be-terminated-when-the-masonry-veneer-extends-below-grade/>

2A  
A-2

BASE DETAIL W/  
VENEER BELOW GRADE

DAILEY ENGINEERING, INC.  
8485 STEPHENSON ROAD  
ONSTED, MI 49266  
PH. # (517) 467-9000



**MIM** MASONRY  
Institute of Michigan

DETAIL SET MW.8.RB.3 (CAVITY WALL W/ 3" RIGID INSULATION)

IN CHARGE:	MIM
DRAWN:	M.W.F.
APPROVED:	T.A.D.
DATE:	03/26/2019
TITLE:	BASE DETAIL W/ VENEER BELOW GRADE
SHEET:	A-3.1

The decision to utilize this information is not within the purview of the MIM, and persons making use of this information do so at their own risk. MIM makes no representation or warranties, expressed or implied, with respect to the accuracy or suitability of this information. MIM and its members disclaim liability for damages of any kind, including any special, indirect, incidental, or consequential damages, which may result from the use of this information. This information is not to be interpreted as indicating compliance with, or waiver of, any provision of any applicable building code, ordinance, standard or law.