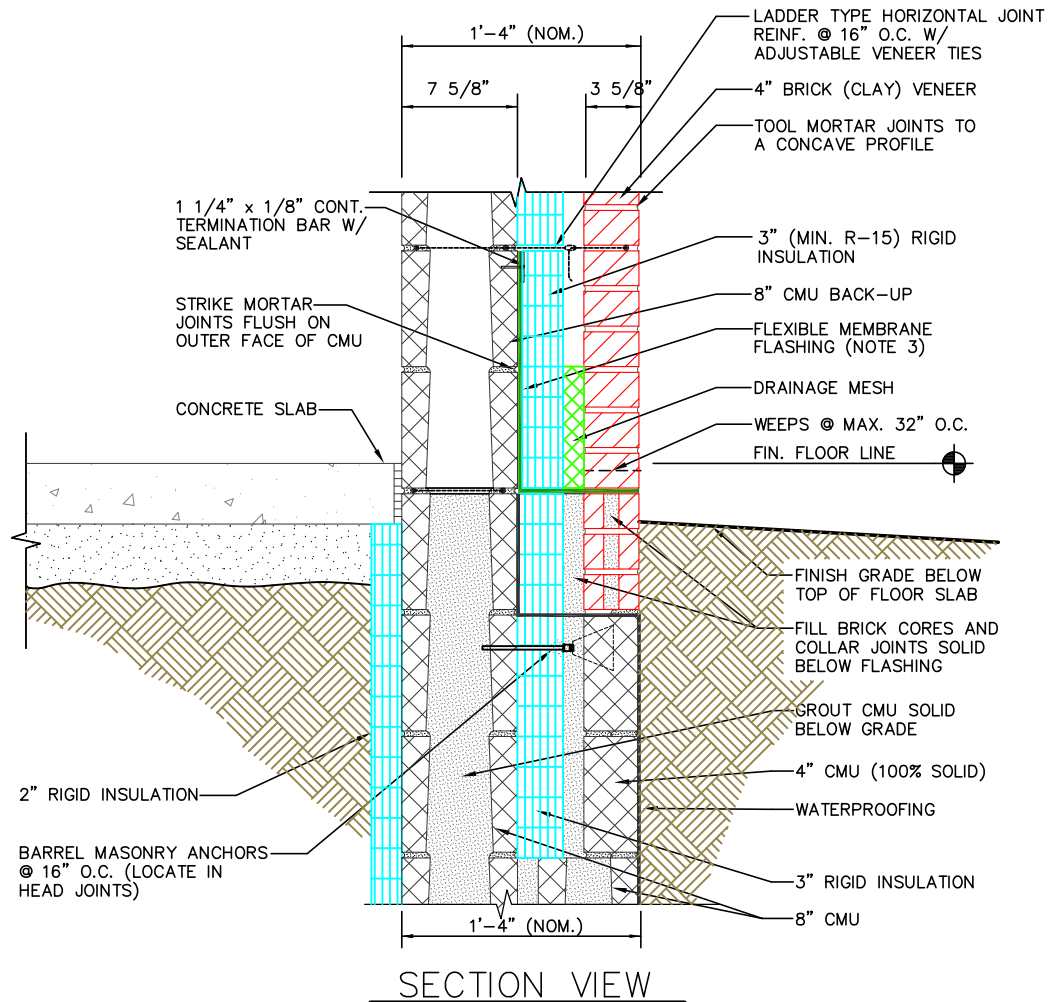


ISOMETRIC VIEW

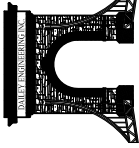


SECTION VIEW

- NOTES**
- 1) CMU BELOW GRADE SHALL BE MEDIUM OR NORMAL WEIGHT.
 - 2) SPECIAL CARE IN BRICK SELECTION MUST BE EXERCISED WHEN PLACING BRICK BELOW GRADE.
 - 3) IF A DRIP EDGE IS NOT DESIRED, THE FLASHING MEMBRANE SHALL, MINIMALLY, EXTEND TO THE OUTBOARD SURFACE OF THE EXTERIOR WALL FINISH. IF A METAL DRIP EDGE IS DESIRED, MODIFY THIS DETAIL TO BE SIMILAR TO THE 2-PIECE FLASHING SHOWN ON DETAIL 6D SHEET A-7. EXERCISE CAUTION WHEN USING METAL DRIP EDGES AT ACCESSIBLE LOCATIONS DUE TO POSSIBLE SHARP METAL SEE: <http://www.mim-online.org/bulletins.html>

2A
A-2
BASE DETAIL W/
VENEER BELOW GRADE
3" RIGID INSULATION

DAILEY ENGINEERING, INC.
8485 STEPHENSON ROAD
ONSTED, MI 49266
PH. # (517) 467-9000
FAX # (517) 467-9010



MASONRY
Institute of Michigan
DETAIL SET MW.8.RB.3 (3" HIGH PERFORMANCE CAVITY WALL)

IN CHARGE:	MIM
DRAWN:	M.W.F.
APPROVED:	T.A.D.
DATE:	02/23/2015
TITLE:	BASE DETAIL W/ VENEER BELOW GRADE
SHEET:	A-3.1

The decision to utilize this information is not within the purview of the MIM, and persons making use of this information do so at their own risk. MIM makes no representation or warranties, expressed or implied, with respect to the accuracy or suitability of this information. MIM and its members disclaim liability for damages of any kind, including any special, indirect, incidental, or consequential damages, which may result from the use of this information. This information is not to be interpreted as indicating compliance with, or waiver of, any provision of any applicable building code, ordinance, standard or law.