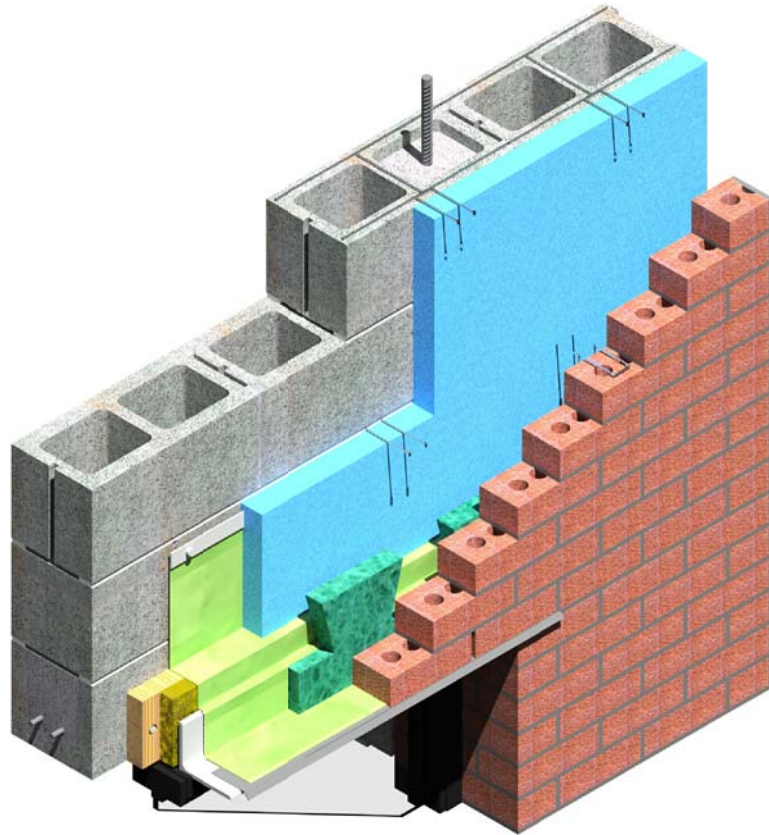


NOTE:

UNPROTECTED ALUMINUM DOOR AND WINDOW FRAMES CAN INTERACT WITH CEMENT-BASED MATERIALS AND INCUR DAMAGE. SEE PCA "MASONRY TODAY" VOLUME II, No. 1 FOR RECOMMENDATIONS.

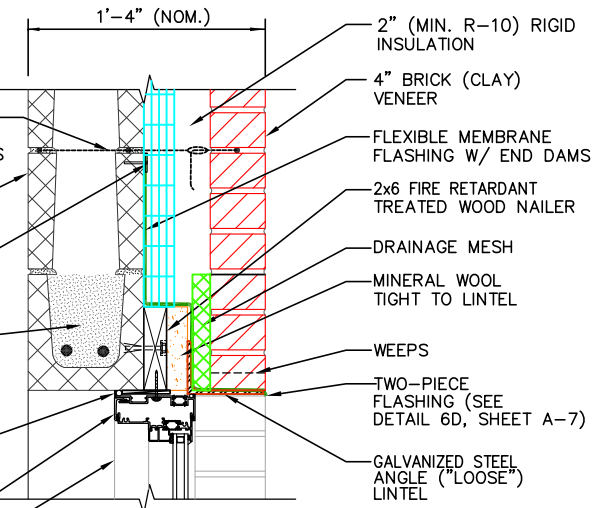
www.cement.org/masonry/cc_al_frames.asp



ISOMETRIC VIEW

NOTE: MASONRY LINTEL MAY BE PREFABRICATED OR FIELD ASSEMBLED

- LADDER TYPE HORIZONTAL JOINT REINF @ 16" O.C. W/ ADJUSTABLE VENEER TIES
- 8" CMU BACK-UP
- 1 1/4" x 1/8" CONT. TERMINATION BAR W/ SEALANT
- LINTEL UNIT (W/ REINF, PER STRUCTURAL DESIGN) GROUTED SOLID
- SEALANT (BOTH SIDES) W/ BACKER ROD/ BOND BREAKER
- RECEPTOR FRAMING
- THERMALLY BROKEN ALUM. WINDOW FRAME



SECTION VIEW

3A
A-1 SHORT SPAN MASONRY LINTEL FOR RECEPTOR STYLE WINDOWS
2" RIGID INSULATION

DAILEY ENGINEERING, INC.
8485 STEPHENSON ROAD
ONSTED, MI 49266
PH. # (517) 467-9000
FAX # (517) 467-9010

111 MASONRY
Institute of Michigan

DETAIL SET MW.8.RB.2 (2" HIGH PERFORMANCE CAVITY WALL)

IN CHARGE:	MIM
DRAWN:	M.W.F.
APPROVED:	T.A.D.
DATE:	11/04/2014
TITLE:	SHORT SPAN MASONRY LINTEL FOR RECEPTOR STYLE WINDOWS
SHEET:	A-4.1

The decision to utilize this information is not within the purview of the MIM, and persons making use of this information do so at their own risk. MIM makes no representation or warranties, expressed or implied, with respect to the accuracy or suitability of this information. MIM and its members disclaim liability for damages of any kind, including any special, indirect, incidental, or consequential damages, which may result from the use of this information. This information is not to be interpreted as indicating compliance with, or waiver of, any provision of any applicable building code, ordinance, standard or law.