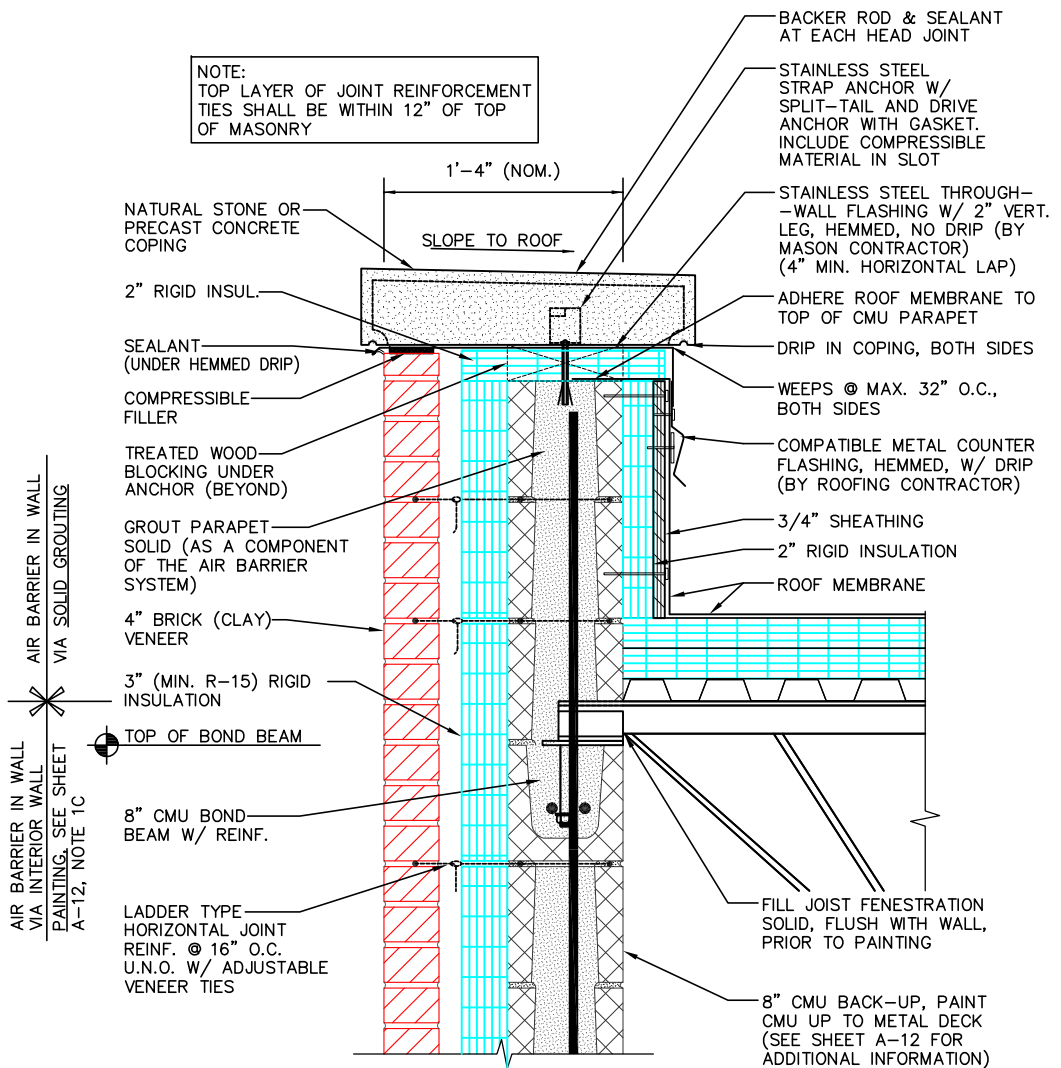


ISOMETRIC VIEW

NOTE:  
TOP LAYER OF JOINT REINFORCEMENT  
TIES SHALL BE WITHIN 12" OF TOP  
OF MASONRY



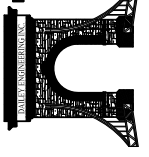
SECTION VIEW

10A  
A-2

STONE / PRECAST  
COPING PARAPET DETAIL

3" RIGID INSULATION

DAILEY ENGINEERING, INC.  
8485 STEPHENSON ROAD  
ONSTED, MI 49266  
PH. # (517) 467-9000  
FAX # (517) 467-9010



**111 MASONRY**  
Institute of Michigan

DETAIL SET MW.8.RB.3 (3" HIGH PERFORMANCE CAVITY WALL)

IN CHARGE:	MIM
DRAWN:	M.W.F.
APPROVED:	T.A.D.
DATE:	02/23/2015
TITLE:	STONE/PRE-CAST COPING PARAPET DETAIL
SHEET:	A-11.1

The decision to utilize this information is not within the purview of the MIM, and persons making use of this information do so at their own risk. MIM makes no representation or warranties, expressed or implied, with respect to the accuracy or suitability of this information. MIM and its members disclaim liability for damages of any kind, including any special, indirect, incidental, or consequential damages, which may result from the use of this information. This information is not to be interpreted as indicating compliance with, or waiver of, any provision of any applicable building code, ordinance, standard or law.