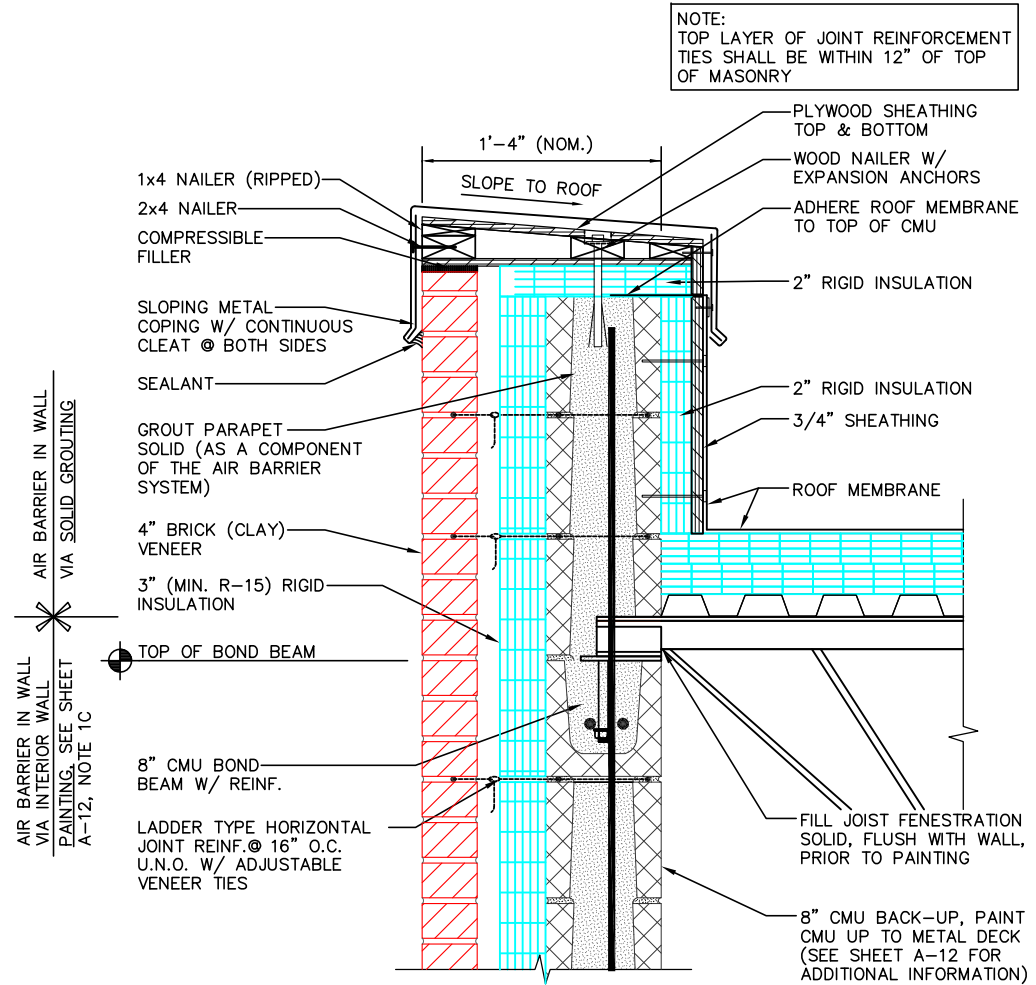


ISOMETRIC VIEW



SECTION VIEW

10B METAL COPING PARAPET DETAIL
 A-2 3" RIGID INSULATION

DAILEY ENGINEERING, INC.
 8485 STEPHENSON ROAD
 ONSTED, MI 49266
 PH. # (517) 467-9000
 FAX # (517) 467-9010



111 MASONRY
 Institute of Michigan
 DETAIL SET MW.8.RB.3 (3" HIGH PERFORMANCE CAVITY WALL)

IN CHARGE:	MIM
DRAWN:	M.W.F.
APPROVED:	T.A.D.
DATE:	02/23/2015
TITLE:	METAL COPING PARAPET DETAIL
SHEET:	A-11.2

The decision to utilize this information is not within the purview of the MIM, and persons making use of this information do so at their own risk. MIM makes no representation or warranties, expressed or implied, with respect to the accuracy or suitability of this information. MIM and its members disclaim liability for damages of any kind, including any special, indirect, incidental, or consequential damages, which may result from the use of this information. This information is not to be interpreted as indicating compliance with, or waiver of, any provision of any applicable building code, ordinance, standard or law.