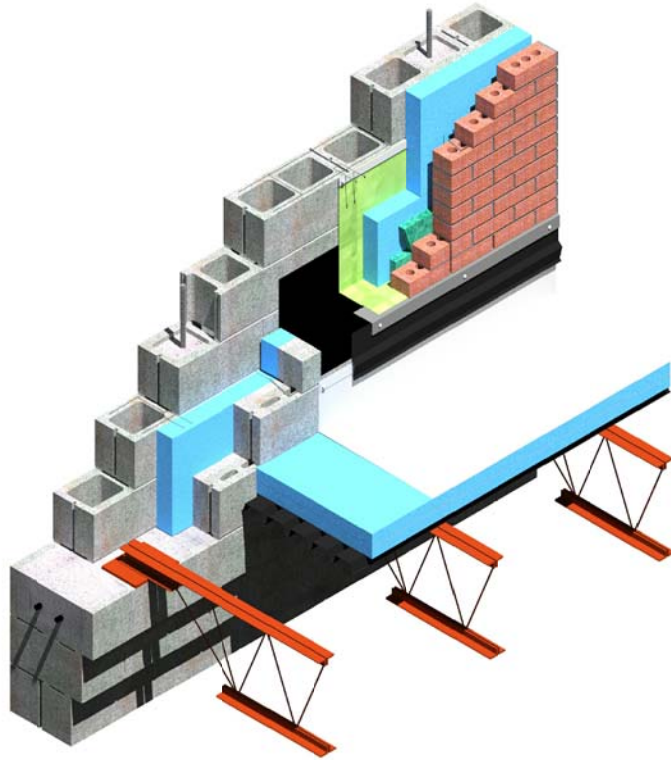


NOTES:

- 1) "LOW SLOPE" ROOFS ARE DEFINED AS ROOFS WITH A SLOPE LESS THAN OR EQUAL TO 3:12 (14 DEGREES)
- 2) THE THERMAL CONTROL LAYER IN THIS DETAIL IS NOT CONTINUOUS.
- 3) THIS DETAIL UTILIZES A 12" CMU SUPPORT WALL, WHICH IS PREFERRED AS IT AVOIDS 16" UNITS, WHICH ARE MORE COSTLY AND MORE DIFFICULT TO LAY.



ISOMETRIC VIEW

12A UPPER WALL / LOW ROOF DETAIL
 A-14.1 (PREFERRED DETAIL)

LADDER TYPE HORIZONTAL JOINT REINFORCEMENT @ 16" O.C. (UNLESS NOTED OTHERWISE) W/ ADJUSTABLE ANCHORS

3" (MIN. R-15) RIGID INSULATION

24" SPACING ON JOINT REINFORCEMENT AT THIS LOCATION ONLY

GROUT COLLAR SOLID

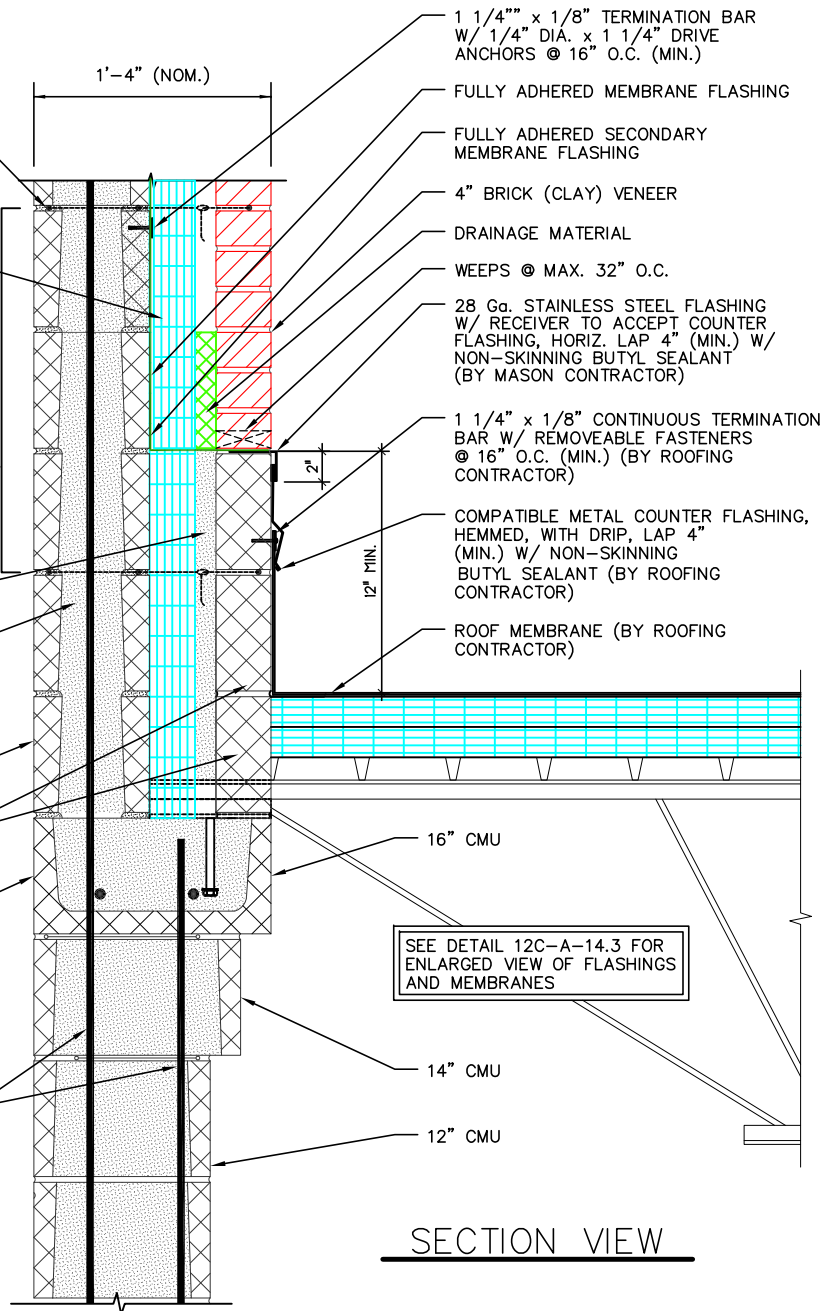
FOR COMPLETE AIR BARRIER TRANSITION, SOLID GROUT THIS CMU (SEE SHEET A-12 FOR ADDITIONAL INFORMATION)

8" CMU BACK-UP

4" CMU (SMOOTH FACE UNITS, 100% SOLID)

REINFORCED BOND BEAM

VERTICAL REINFORCEMENT



1'-4" (NOM.)

2"

12" MIN.

1 1/4" x 1/8" TERMINATION BAR W/ 1/4" DIA. x 1 1/4" DRIVE ANCHORS @ 16" O.C. (MIN.)

FULLY ADHERED MEMBRANE FLASHING

FULLY ADHERED SECONDARY MEMBRANE FLASHING

4" BRICK (CLAY) VENEER

DRAINAGE MATERIAL

WEEPS @ MAX. 32" O.C.

28 Ga. STAINLESS STEEL FLASHING W/ RECEIVER TO ACCEPT COUNTER FLASHING, HORIZ. LAP 4" (MIN.) W/ NON-SKINNING BUTYL SEALANT (BY MASON CONTRACTOR)

1 1/4" x 1/8" CONTINUOUS TERMINATION BAR W/ REMOVEABLE FASTENERS @ 16" O.C. (MIN.) (BY ROOFING CONTRACTOR)

COMPATIBLE METAL COUNTER FLASHING, HEMMED, WITH DRIP, LAP 4" (MIN.) W/ NON-SKINNING BUTYL SEALANT (BY ROOFING CONTRACTOR)

ROOF MEMBRANE (BY ROOFING CONTRACTOR)

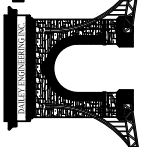
16" CMU

14" CMU

12" CMU

SEE DETAIL 12C-A-14.3 FOR ENLARGED VIEW OF FLASHINGS AND MEMBRANES

DAILEY ENGINEERING, INC.
 8485 STEPHENSON ROAD
 ONSTED, MI 49266
 PH. # (517) 467-9000



111 MASONRY
 Institute of Michigan
 DETAIL SET MW.8.RB.3 (CAVITY WALL W/ 3" RIGID INSULATION)

IN CHARGE:	MIM
DRAWN:	M.W.F.
APPROVED:	T.A.D.
DATE:	03/26/2019
TITLE:	UPPER WALL / LOW ROOF DETAIL (PREFERRED)
SHEET:	A-14.1

The decision to utilize this information is not within the purview of the MIM, and persons making use of this information do so at their own risk. MIM makes no representation or warranties, expressed or implied, with respect to the accuracy or suitability of this information. MIM and its members disclaim liability for damages of any kind, including any special, indirect, incidental, or consequential damages, which may result from the use of this information. This information is not to be interpreted as indicating compliance with, or waiver of, any provision of any applicable building code, ordinance, standard or law.