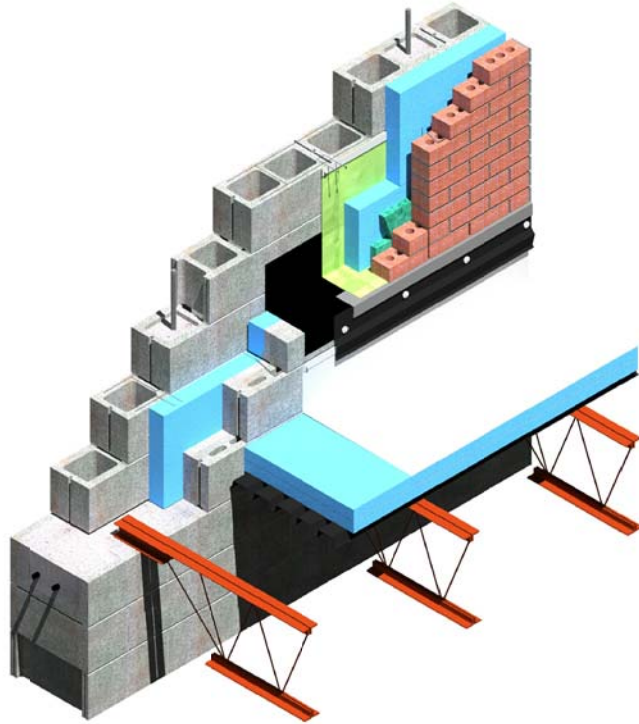


NOTES:

- 1) "LOW SLOPE" ROOFS ARE DEFINED AS ROOFS WITH A SLOPE LESS THAN OR EQUAL TO 3:12 (14 DEGREES)
- 2) THE THERMAL CONTROL LAYER IN THIS DETAIL IS NOT CONTINUOUS.



ISOMETRIC VIEW

LADDER TYPE HORIZONTAL JOINT REINFORCEMENT @ 16" O.C. (UNLESS NOTED OTHERWISE) W/ ADJUSTABLE TIES

3" (MIN. R-15) RIGID INSULATION

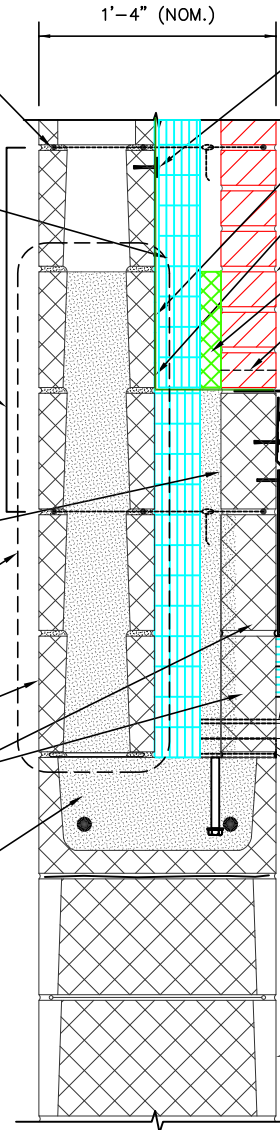
24" SPACING ON JOINT REINFORCEMENT AT THIS LOCATION ONLY

GROUT COLLAR SOLID
FOR COMPLETE AIR BARRIER TRANSITION, SOLID GROUT THIS CMU (SEE SHEET A-12 FOR ADDITIONAL INFORMATION)

8" CMU BACK-UP

4" CMU (SMOOTH FACE UNITS, 100% SOLID)

GROUT SOLID BOND BEAM



1'-4" (NOM.)

- 1 1/4" x 1/8" TERMINATION BAR W/ 1/4" DIA. x 1 1/4" DRIVE ANCHORS @ 16" O.C. (MIN.)
- FULLY ADHERED MEMBRANE FLASHING
- FULLY ADHERED SECONDARY MEMBRANE FLASHING
- 4" BRICK (CLAY) VENEER
- DRAINAGE MATERIAL
- WEEPS @ MAX. 32" O.C.
- 28 Ga. STAINLESS STEEL FLASHING W/ 2" VERTICAL LEG, HEMMED, NO DRIP, HORIZONTAL LAP 4" (MIN.) W/ NON-SKINNING BUTYL SEALANT (BY MASON CONTRACTOR)
- 1 1/4" x 1/8" CONTINUOUS TERMINATION BAR W/ REMOVEABLE FASTENERS @ 16" O.C. (MIN.) (BY ROOFING CONTRACTOR)
- COMPATIBLE METAL COUNTER FLASHING, HEMMED, WITH DRIP, LAP 4" (MIN.) W/ NON-SKINNING BUTYL SEALANT (BY ROOFING CONTRACTOR)
- ROOF MEMBRANE (BY ROOFING CONTRACTOR)

2"
12" MIN.

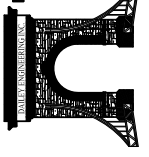
SEE DETAIL 13/A-14.2 FOR ENLARGED VIEW OF FLASHINGS AND MEMBRANES

16" CMU

SECTION VIEW

12 UPPER WALL / LOW ROOF FLASHING DETAIL
 A-14.1 3" RIGID INSULATION

DAILEY ENGINEERING, INC.
8485 STEPHENSON ROAD
ONSTED, MI 49266
PH. # (517) 467-9000
FAX # (517) 467-9010



110 MASONRY
Institute of Michigan

DETAIL SET MW.8.RB.3 (3" HIGH PERFORMANCE CAVITY WALL)

IN CHARGE:	MIM
DRAWN:	M.W.F.
APPROVED:	T.A.D.
DATE:	02/23/2015
TITLE:	UPPER WALL / LOW ROOF FLASHING DETAIL
SHEET:	A-14.1

The decision to utilize this information is not within the purview of the MIM, and persons making use of this information do so at their own risk. MIM makes no representation or warranties, expressed or implied, with respect to the accuracy or suitability of this information. MIM and its members disclaim liability for damages of any kind, including any special, indirect, incidental, or consequential damages, which may result from the use of this information. This information is not to be interpreted as indicating compliance with, or waiver of, any provision of any applicable building code, ordinance, standard or law.