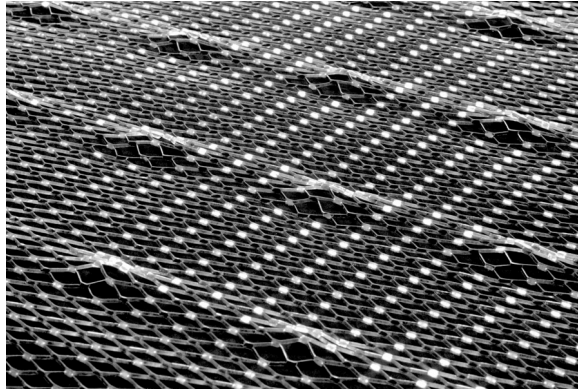




**“Specialists in Expanded Metal Building Products”**

## **SELF-FURRED DIAMOND MESH LATH SPECIFICATION**



<b>Wt. Per Sq. Yd.</b>	<b>Sheet Size</b>	<b>Pcs. / Bdl</b>	
2.50 lbs.	27" x 97"	10	250 sheets per pallet

25 bundles per pallet

**Niles's Self-Furred Diamond Metal Lath provides a 1/4" indentation in the metal lath to hold away from the sheathing base and reinforcement (plaster embedment) for all types of walls and fireproofing of steel beam and columns. Provides ample keying for scratch coat and is commonly used for plaster machine application. This lath is produced with ASTM A653 standard specification for steel sheet, zinc-coated (galvanized) or zinc-iron alloy coated (galvannealed) by hot-dip process.**

ASTM C841 Standard specification for installation of interior lathing and furring  
ASTM C847 Standard specification for Metal Lath (2.5 and 3.4 only)

MASONPRO, Inc.  
43300 Seven Mile Road  
Northville, MI 48167  
1-800-659-4731  
[www.masonpro.com](http://www.masonpro.com)

NILES BUILDING PRODUCTS CO.