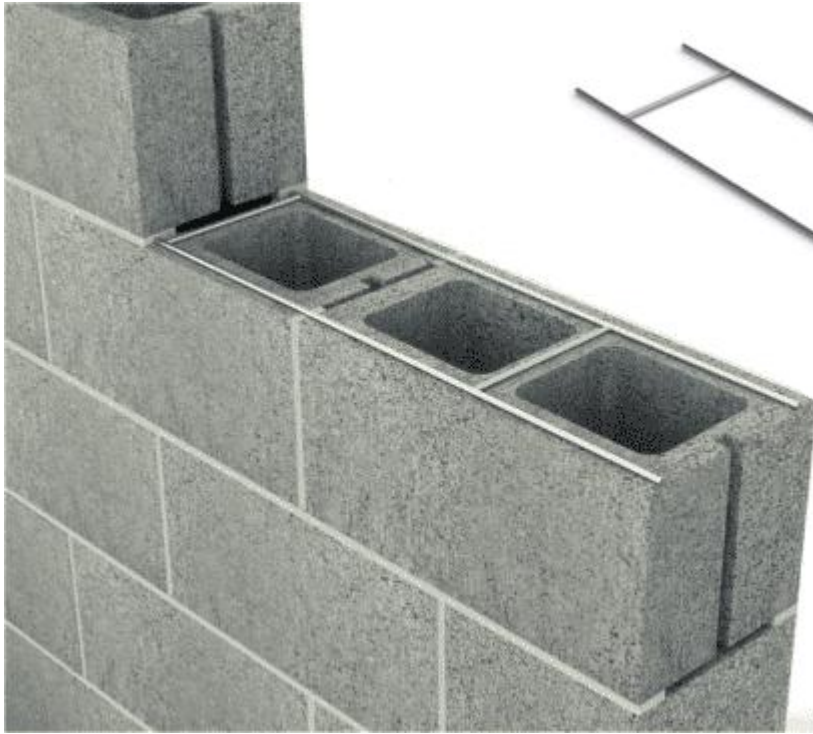


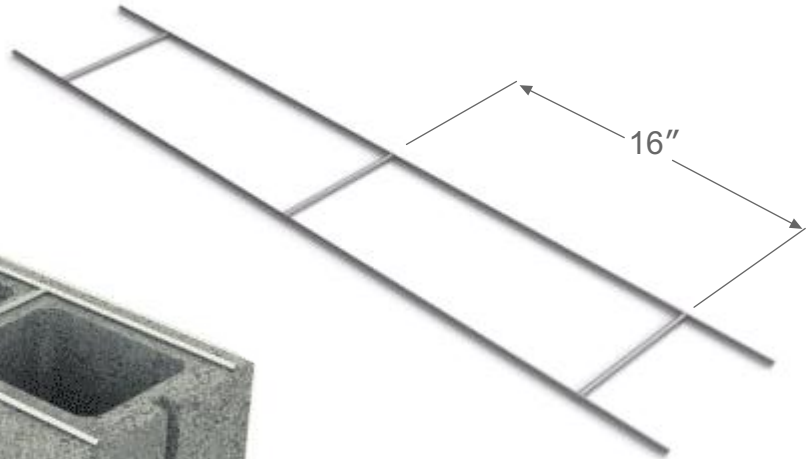
PRODUCT SUBMITTAL


WIRE-BOND

Series 200 Ladder Mesh (For Single Wythe Wall)



16" O.C. cross rods allow core clearance.



MATERIAL CONFORMANCE	SIZES / FINISHES	
<p>Wire (Carbon Steel): Prefabricated from cold-drawn steel wire conforming to ASTM A1064/A1064M, ASTM A82/ A82M Tensile Strength - 80,000 p.s.i. Yield Point - 70,000 p.s.i. minimum</p> <p>ASTM A951/A951M (Standard Specification for Steel Wire for Masonry Joint Reinforcement)</p> <p>ACI / ASCE 530 (Building Code Requirements for Masonry Structures)</p> <p>Mill Galvanized coating: ASTM A641/A641M (0.1 oz/ft) Hot-Dip Galvanized after fabrication: ASTM A153/A153M-B2 (1.5 oz/ft)</p> <p>Wire (Stainless Steel): ASTM A580/ASTM 580M - AISI Type 304 (Type 316 available on special orders)</p> <div style="display: flex; align-items: center; margin-top: 20px;">  <p>Recycled Content: Mill Galvanized & Fot Dipped, 82.8% Post-Consumer 17% Post Industrial / Pre Consumer</p> <p>Stainless Steel 97% Pre-Consumer V O C Content - 0%</p> </div>	<p>Mill Galvanized/Zinc Coating: ASTM A641 / A641M (0.10 Oz per sq ft)</p> <p>Hot Dip Galvanized after fabrication / Zinc Coating ASTM A153 / A 153 - B2 (1.50 oz per sq ft)</p> <p>Stainless Steel ASTM 580 / ASTM 580M Type 304 (Type 316 available on special order)</p> <div style="display: flex; justify-content: space-between; margin-top: 20px;"> <div data-bbox="873 1675 987 1759"> <p>WIRE SIZE: Standard Other</p> </div> <div data-bbox="1091 1675 1247 1738"> <p>Side Rods 9 Gauge (.148 in)</p> </div> <div data-bbox="1302 1675 1425 1738"> <p>Cross Rods 9 Gauge</p> </div> </div>	



www.wirebond.com

MASONPRO, Inc.
43300 Seven Mile Road
Northville, MI 48167
1-800-659-4731
www.masonpro.com