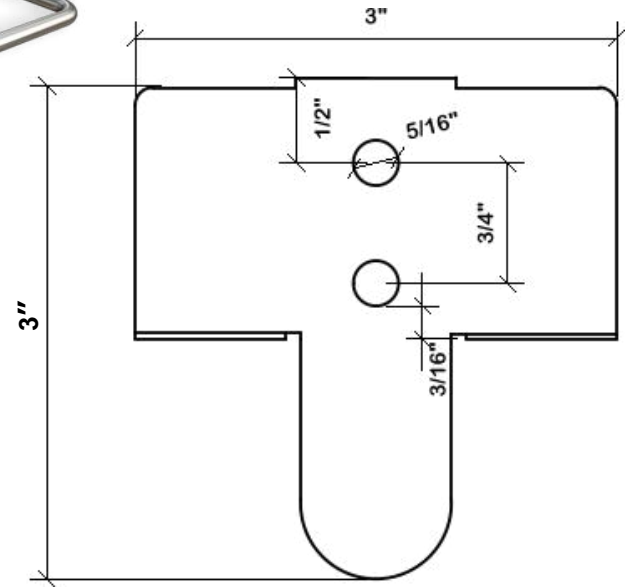
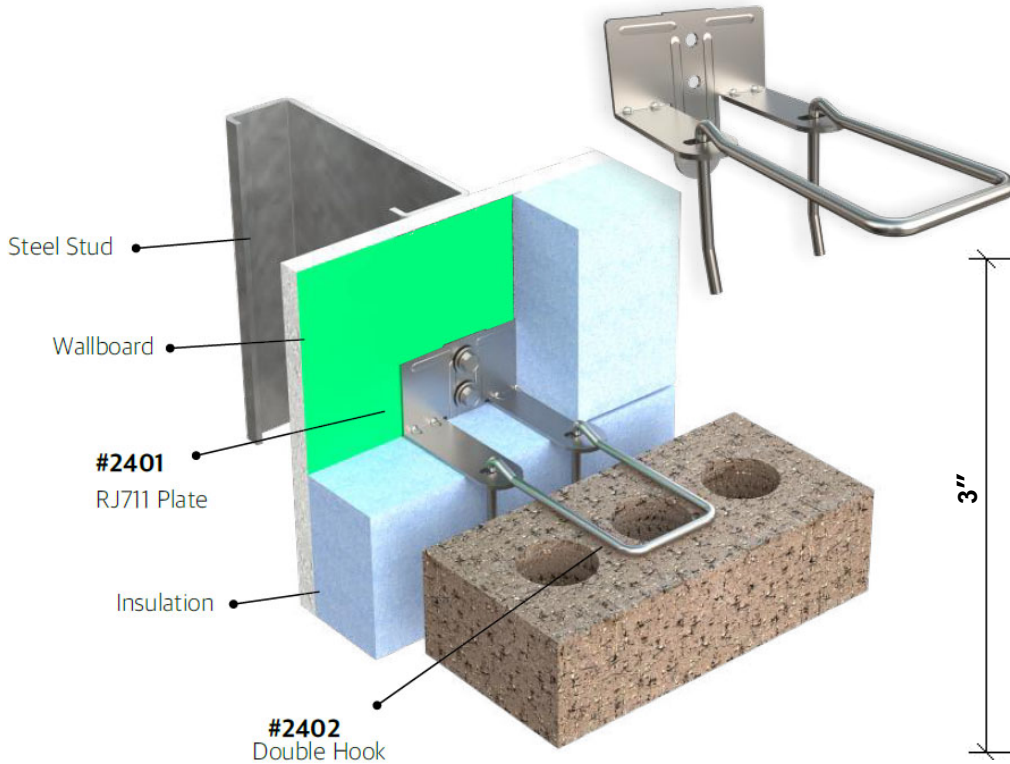


# PRODUCT SUBMITTAL

WIRE-BOND

## # 2401 RJ-711 Adjustable Veneer Anchor



### MATERIAL CONFORMANCE

**ASTM A82 / A82M** - (Cold drawn steel wire)  
Tensile Strength - 80,000 psi  
Yield Point - 70,000 psi

**ACI / ASCE 530** - (Building code requirements for masonry structures)

**SHEET METAL** - (Carbon Steel) **ASTM A1008 / A1008M**

Mill Galvanized / Zinc Coating: **ASTM A641 / A641M (0.10 Oz per sq ft)**

Hot Dip Galvanized after fabrication / Zinc Coating  
**ASTM A153 / A153M-B2 (1.50 oz per sq ft)**

Stainless Steel **ASTM 580 / ASTM 580M Type 304** (Type 316 available on special order)

#### Recycled Content:

Mill Galvanized & Hot Dipped,  
82.8% Post-Consumer  
17% Post Industrial / Pre-Consumer,

Stainless Steel,  
60% Post Consumer  
V O C Content - 0%

### SIZES / FINISHES

#### # 2401 RJ711:

14 gauge     12 gauge

Must be 3/4" more than insulation

#### Insulation:

0"     1"     1-1/2"     2"     2-1/2"

3"     3-1/2"     4"

#### # 2402 Hook: 3/16" Diameter Standard

3-1/4"     4-1/4"     5-1/4"     Other \_\_\_\_\_

#### FINISH:

Mill Galvanized

Hot Dip Galvanized

Stainless Steel



WIRE-BOND

[www.wirebond.com](http://www.wirebond.com)

MASONPRO, Inc.  
43300 Seven Mile Road  
Northville, MI 48167  
1-800-659-4731  
[www.masonpro.com](http://www.masonpro.com)