

TECH DATA

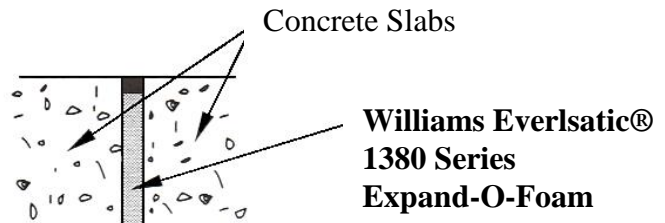
Everlastic®
Expand-O-Foam
1380 Series

Description

- Expanded, closed cell, plank, polyethylene foam. Economical, lightweight, flexible, compressible, resilient, non-absorbent, inherent bond breaker.

Material Specifications

- ASTM D 1056 ASTM D 3575



Applications

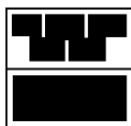
- Concrete expansion joint filler for use with cold applied sealants. Place Expand-O-Foam against existing formed concrete; place subsequent concrete directly to it.
- Pipe isolation, thermal wrap.
- Acoustical partition closures.
- Corrugated deck closures.
- Masonry expansion joints and column isolation.
- Many other uses.

Available sizes and packaging

- Standard thickness: 1/4" to 4".
- Widths from 1/2" to 48".
- Will cut to custom size and/or profile.
- Self-stick pressure sensitive adhesive optional.

Typical Physical Properties

Property	Test Method	Typical Values
Density	ASTM D 1622	2.0 lb./ft ³ (32.04 kg/m ³)
Compression Strength		
10% deflection	ASTM D 3575	10 psi (69 KPa) max
80% deflection	ASTM D 3575	125 psi (862.49 KPa) max
Tensile Strength	ASTM D 3575	55 psi (379.50 KPa)
Water absorption	ASTM D 3575	0.5% vol. max
Temperature Stability (N/A	-40° F to 160° F (-40° C to 71° C)



We do not guarantee the applicability or accuracy of this information or the suitability of our products for any given situation. Users should make their own tests to determine the suitability of any product for their particular purpose. The products discussed are sold without warranty, either expressed or implied, buyer assumes all responsibility for any loss or damage arising from the handling or use of our products, whether done in accordance with directions or not. Statements concerning the possible use of our products are not intended as recommendations to use our products in the infringement of any patent.

MASONPRO, Inc.
43300 Seven Mile Road
Northville, MI 48167
1-800-659-4731
www.masonpro.com