

Mesh Ties
Intersecting Walls

GROUT GRUNT™



\$46.95 ea

(12 pack)

2 & 6 Packs
Also Available!

**SCOOP
PASS
POUR!**

- High Capacity
- Rugged Durability
- Monolithic (easy to clean)
- Fast Pours



FERO FAST™

Relief Angle Support

- Reduces Thermal Bridging
- Costs Less & Saves Labor



NEW & IMPROVED

MORTAR TUB
10 cu.ft.



MASONPRO®

MASONRY SPECIALTY MATERIALS & SUPPLIER

Order Online
masonpro.com

or call 1-800-659-4731

Need a project quote?

Veneers:

- Brick Ties
- Flashing
- Term Bar
- Drip Edge
- Mortar Net
- Weeps
- Stone Anchors

CMU Walls:

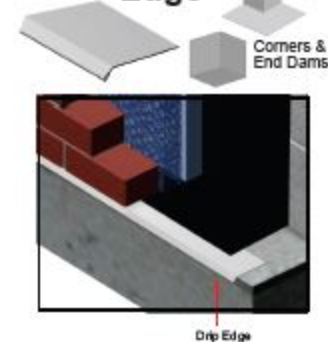
- Wire Reinforcing
- Control Joint
- Positioners
- Mesh Ties
- Grout Stop

Send quote requests to:

sales@masonpro.com

or call 1-800-659-4731

Stainless Drip Edge



Scaffolding Ties

Available In:
5" Tie.....\$1.89 ea
9" Tie.....\$2.19 ea
(100/case)



Thru-Wall Flashing



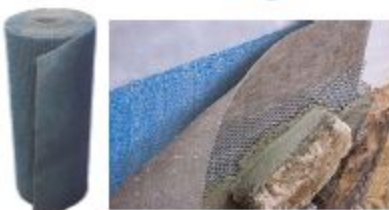
Flashing Termination Bar
• PVC • Aluminum • Stainless

mortairvent®

.25" Thin
Veneer Drainage
w/ Geofabric
39" x 61.5' Rolls
(200 sq.ft.)

\$.59 sq.ft.

Between stone veneer & substrate



BULLNOSER™ CMU Corner Router



1" Radius Diamond Router Wheel

- Wet or dry wheel designed for 4" grinder w/ 5/8" - 11w threaded arbor

Only **\$189⁹⁵**

Includes FREE safety glasses, ear plugs & dust mask!



Window Protection
24" X 600' roll
\$54.95 ea



Masonry
Wall Scraper –
w/ 6' standard handle
\$79.95 ea

MASON PRONET™ DT Lower Price SAVE \$\$\$

Same great shape you recognize and love!

1", 2" & .4"



GROUT-STOP™

Available in:
1", 2" & .4"



Order Online **masonpro.com** or call **1-800-659-4731**



Post Speed Lead

- Inside & Outside Corners
 - Piers & Chimneys
 - Quoin Corners
- \$465** per set
- Fewer Parts, Faster Set Up & Higher Productivity!*



Mortar Net® Weeps

Gray
\$.34 ea (modular)
125 per carton

Other Colors Available

Cell Vents (Modular)

\$.39 ea

- Clear 100 per carton
- Gray 200 per carton



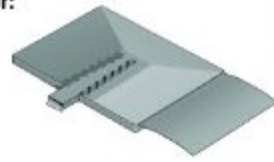
YORK
Flashings

- 304 Self Adhering Stl/Stl
- Multi-Flash™ 500



ONE-PIECE BLOCK-FLASH™
for Single-Wythe CMU Construction

Available for:
6"
8"
10"
12"
CMU



(100/case w/ Drainage Mesh)

MASONPRO®
MASONRY SPECIALTY MATERIALS & SUPPLIES

43300 Seven Mile Road
Northville, MI 48167



DUPONT®
CavityMate™

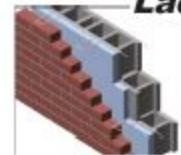


Serving the Masonry Industry Since 1988

Ladder



Ladder Hook & Eye



Call for Pricing!

Thermafiber®
RainBarrier® 45
Mineral Wool



DUPONT®
Thermax™



DUPONT®
CAVITYMATE™
Ultra

DUPONT®
CAVITYMATE™

Stone Anchors
Stainless Steel



Custom Sizes & Other Types Available!

Stone Lifting Clamps

- 3/4 Ton.....\$295 ea
- 1 Ton.....\$398 ea
- 2 Ton.....\$789 ea

Furnished with a 1/2" stud for safety

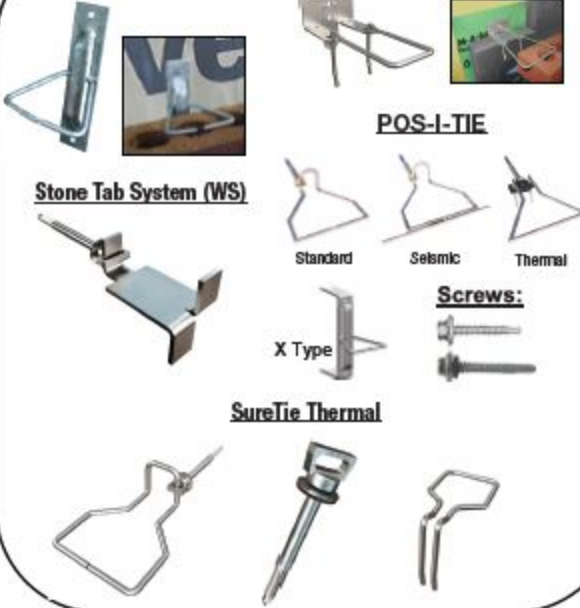
Pin Lewis



Sizes Available:
Pin Size & Length Capacity
-5/8" x 4" 1,500 lbs
-3/4" x 4-1/2" 3,000 lbs
Call on other sizes

Type III

RJ711 (with or without insulation)



QUIKPOINT™ Mortar Gun
Quick, Fast & Accurate



\$299
w/ Drill

Core-Lock™

- 8" Single
 - 12" Single
- (100/case)



F-8 Positioners

- 6" CMU
 - 8" CMU
 - 10" CMU
 - 12" CMU
- (200/case)



Smart-T Bolt™
(with nuts & washers)
Clean Out Covers



HELIFIX
SUSTAINABLE STRUCTURAL SOLUTIONS

Masonry Repair Solutions



L-Corner Brackets

- Steel**
1-1/4" x 24" x 10" x 1/4" leg
- Lightweight Aluminum**
1-1/4" x 24" x 12" x 5/16" leg



GREAT STUFF PRO



PL300

Seal & Adhere

DUPONT®
LIQUIDARMOR™
Flashing & Sealant



Order Online **masonpro.com** or call **1-800-659-4731**



masonpro.com 1-800-659-4731