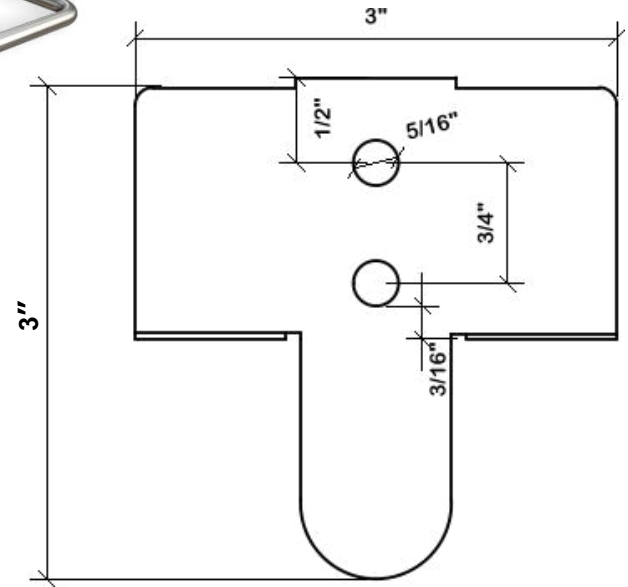
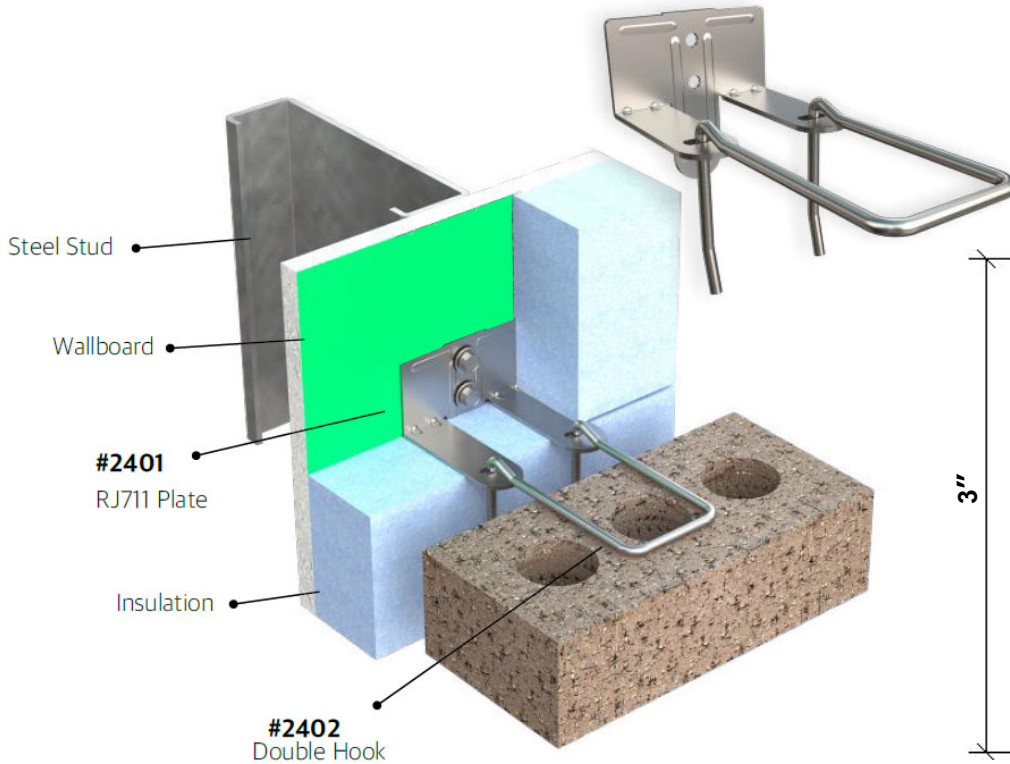


PRODUCT SUBMITTAL

WIRE-BOND

2401 RJ-711 Adjustable Veneer Anchor



MATERIAL CONFORMANCE

WIRE (carbon steel)

Cold drawn steel wire conforming to **ASTM A1064 / A1064M**:
Tensile Strength - 80,000 psi
Yield Point - 70,000 psi minimum

WIRE (Stainless Steel)

Stainless Steel **ASTM 580 / ASTM 580M** ASI Type 304 & Type 316

Mill Galvanized / Zinc Coating: **ASTM A641 / A641M (0.10 Oz per sq ft)**

Hot Dip Galvanized after fabrication / Zinc Coating
ASTM A153 / A153M-B2 (1.50 oz per sq ft)

SHEET METAL - (Carbon Steel) **ASTM A1008 / A1008M**

Recycled Content:

Mill Galvanized & Hot Dipped,
82.8% Post-Consumer
17% Post Industrial / Pre-Consumer,

Stainless Steel,
60% Post Consumer
V O C Content - 0%



SIZES / FINISHES

2401 RJ711:

14 gauge 12 gauge

Must be 3/4" more than insulation

Insulation:

0" 1" 1-1/2" 2" 2-1/2"

3" 3-1/2" 4"

2402 Hook: 3/16" Diameter Standard

3-1/4" 4-1/4" 5-1/4" Other _____

FINISH:

Mill Galvanized

Hot Dip Galvanized

Stainless Steel

WIRE-BOND

www.wirebond.com

MASONPRO, Inc.
43300 Seven Mile Road
Northville, MI 48167
1-800-659-4731
www.masonpro.com