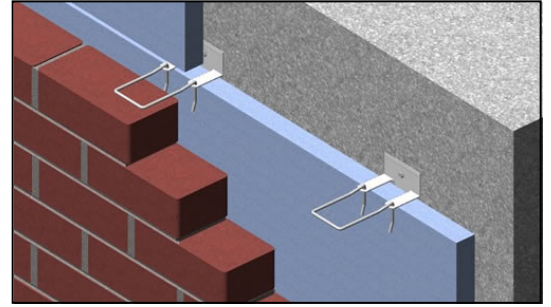
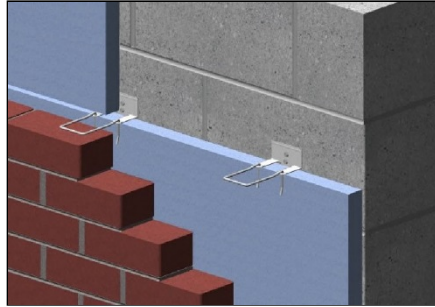


## Brick Veneer on CMU or Concrete Substrate

Surface Mounted with Rigid Cavity Insulation -  
Anchor in Tension



### Product Information:

#### Uses:

- Tying brick veneer to CMU or Concrete Substrate with rigid cavity insulation

#### Dimension:

- ABV3012 for 1" insulation
- ABV3022 for 1-1/2" insulation
- ABV3033 for 2" insulation
- ABV3034 for 2-1/2" insulation
- ABV3035 for 3" insulation

Call on other sizes including 3-1/2" & 4"

#### Finish:

- Hot Dip Galvanized after fabrication/ Zinc Coating  
ASTM A153/A153M-B2 (1.50 oz per square foot)

#### Advantages:

- Simple and economical to install
- Simplifies installments of cavity insulation
- Promotes high thermal performance

#### Fastener:

Hit Pins – for CMU & Concrete  
1/4" X 1-1/4"



For technical assistance call us toll free at 1-800-659-4731.