

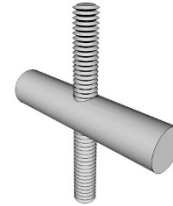
## Stone Anchors

Tying to CMU, concrete, steel or wood

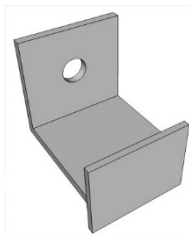
### Sample Profiles



U-Strap



Threaded Barrel Anchor  
(Eisenshank)



Welded Plate-Strap



'U' Anchor Rod

### Product Information:

#### Uses:

- Useful on veneers, composites, coping, soffits...

#### Dimensions:

- Custom sizes call 1-800-659-4731 or sales@masonpro.com

#### Finish:

- Stainless Steel - Type 304 – *Natural Stone*  
ASTM A666, ASTM A480/A480M and ASTM A240/A240M
- Hot Dip Galvanized after fabrication/ Zinc Coating – *Precast or Cast Stone*  
ASTM A153/A153M-B2 (1.50 oz. per sq ft)
- Powder Coated Stainless

#### Advantages:

- Simple and economical to use
- Will not corrode in contact with limestone
- Extremely long life

For technical assistance call us toll free at 1-800-659-4731.